

Powered by WiS<sup>+</sup>

**SonoScape**



**ELITE**

Lucid Imaging · Intelligent Solution · Talented Features · Easeful Experience

# Elite Experience Meets Value

## P50 ELITE

**SonoScape**

Powered by Wis<sup>+</sup>

**ELITE**

*Lucid Imaging · Intelligent Solution · Talented Features · Easeful Experience*

**E**volved Architecture Sparks Profound  
Vision

**L**ucid Imaging Boosted by All-rounded  
Renovation

**I**ntelligent Solution at Your fingertips

**T**alented Features Inspire More Applications

**E**aseful Experience within Easy Reach



ELITE, powered by Wis<sup>+</sup> platform, carries forward the premium performance in achieving multifaceted Evolution, Lucid imaging, Intelligent solution, Talented features, and Easeful experience. The unremitting research efforts on practical clinical needs boost the potential of ELITE to revolutionize the spectrum of patient care, with leading edge ultrasound technologies.



# All-rounded Renovation Boosts Lucid Imaging

**SonoScape**

# 01

## Lucid Imaging Boosted by All-rounded Renovation

---

### Innovative Transducers

- Single crystal
- Composite crystal
- Specialty probes

### Potent Processor

- CPU
- GPU
- 14bit A/D

### Enhanced Visualization

- $\mu$ -Scan<sup>+</sup>
- HQ-Scan
- SR-Flow
- Bright Flow
- Micro F
- HD-Zoom





ALL-ROUNDED  
RENOVATION BOOSTS  
LUCID IMAGING

**SonoScape**

## UPGRADED HARDWARE POTENT PROCESSORS FOR PREMIUM PERFORMANCE

**CPU**  
Data  
Processing  
Competence

4 times

**GPU**  
Response  
Rate

10 times

**FPGA**  
System Frame Rate

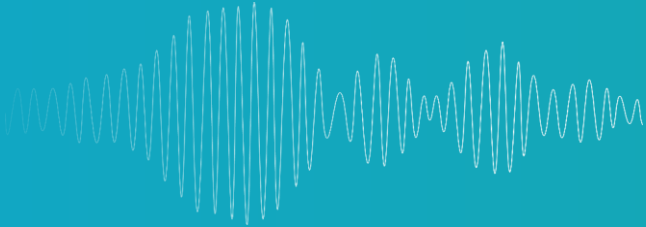
1.5 times



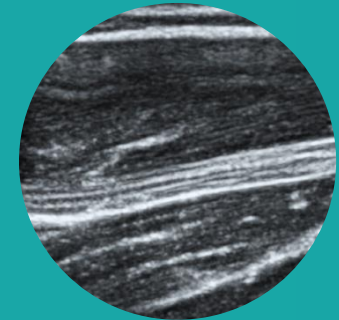
ALL-ROUNDED  
RENOVATION BOOSTS  
LUCID IMAGING

**SonoScape**

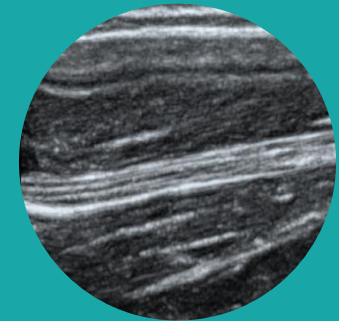
# UPGRADED HARDWARE HIGHER A/D CONVERSION FOR DETAILED RESOLUTION



Elite High A/D Conversion



Traditional A/D  
Conversion





ALL-ROUNDED  
RENOVATION BOOSTS  
LUCID IMAGING

# Innovative Single Crystal Technology Transducers

- Perfect uniformity of crystal alignment leading to a much higher efficiency in energy transmission
- Better penetration and higher S/N ratio especially during difficult-patient scanning
- Ultra-thin crystal slicing effectively reduces sidelobe effect and improves spatial resolution



S1-5



C1-6

**SonoScape**



ALL-ROUNDED  
RENOVATION BOOSTS  
LUCID IMAGING

# Innovative Complete Composite Crystal Linear Family Transducers

- Reforming the conventional piezoelectric materials, composite crystal transducers achieves a better acoustic spectrum and lower acoustic impedance to serve well in vascular, breast, thyroid, MSK, etc.
- The combo of 12L-A, 12L-B, 9L-A covers an ultra-wide frequency bandwidth, leaving nearly no blind spot for all sorts of scanning.



12L-A



12L-B



9L-A

**SonoScape**

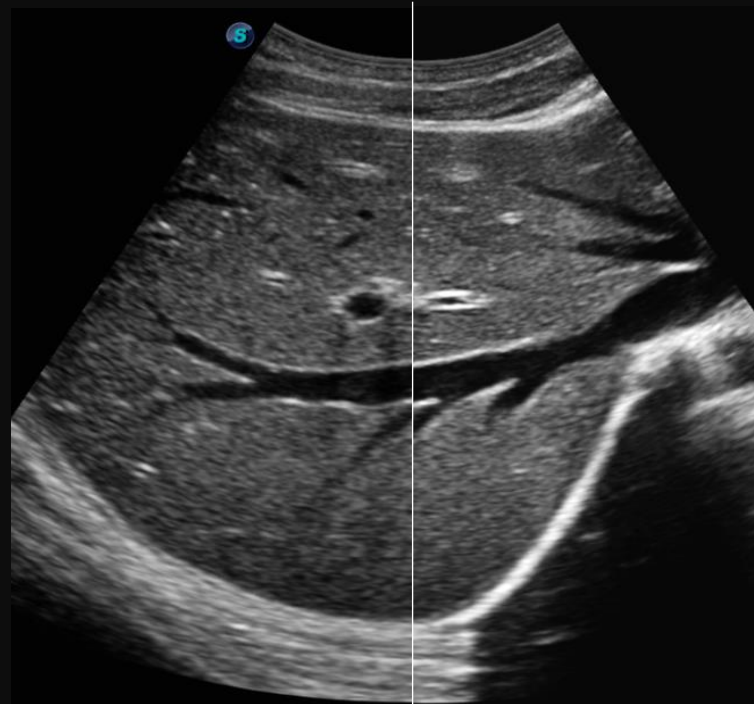


ALL-ROUNDED  
RENOVATION BOOSTS  
LUCID IMAGING

EFFECTIVE ALGORITHMS  
FINER SPECKLE REDUCTION EMPOWERED BY "PLUS"

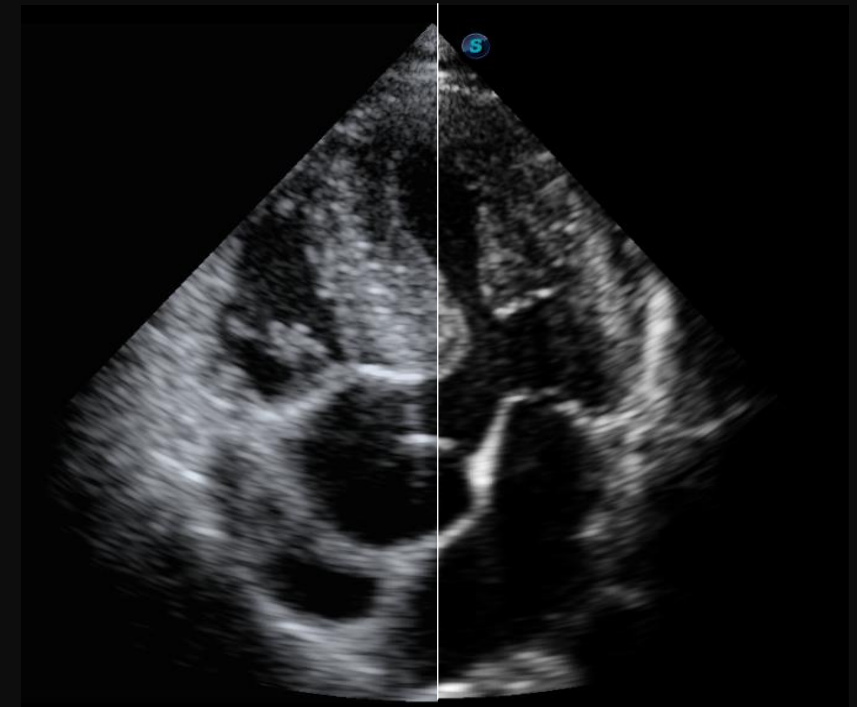
## $\mu$ -Scan<sup>+</sup>

- Better image with excellent speckle and artifact rejection
- Improved contrast resolution to easily identify the lesions
- Authentic detail display of anatomy and pathology



$\mu$ -Scan<sup>+</sup> off

$\mu$ -Scan<sup>+</sup> on



$\mu$ -Scan<sup>+</sup> off

$\mu$ -Scan<sup>+</sup> on

**SonoScape**



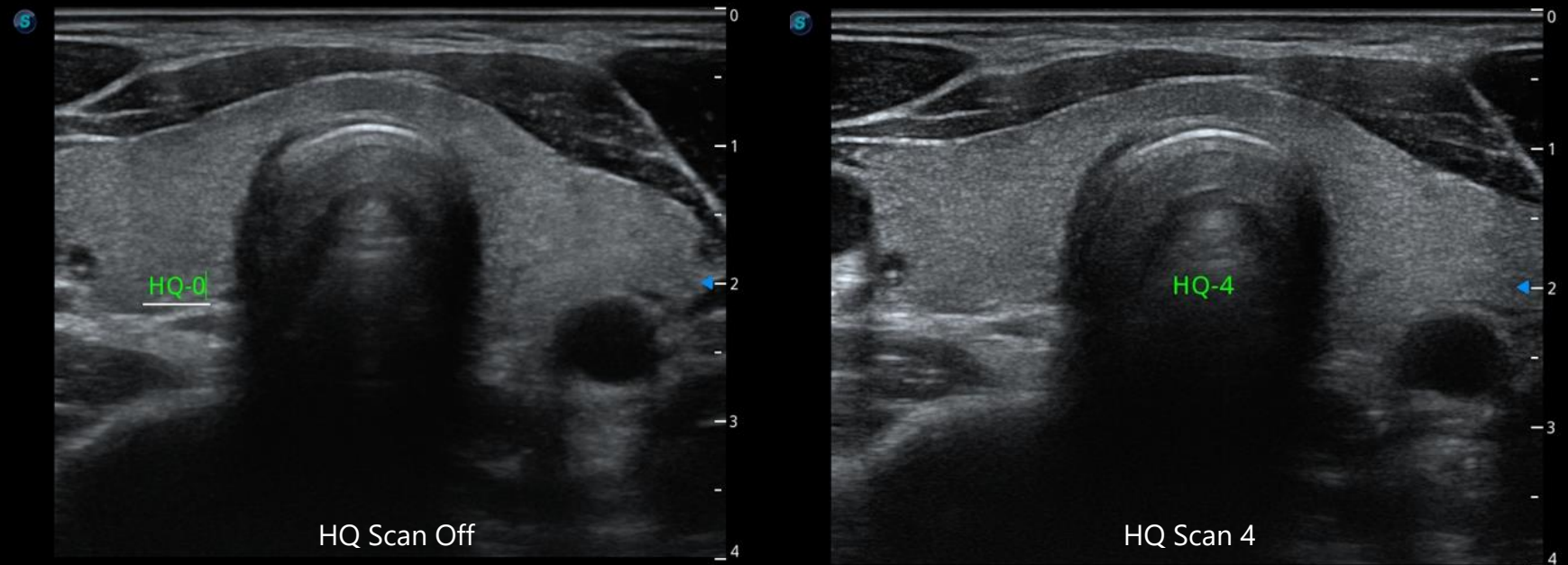


ALL-ROUNDED  
RENOVATION BOOSTS  
LUCID IMAGING

EFFECTIVE ALGORITHMS  
BETTER CONTRAST AND DETAILS EMPOWERED BY HQ-  
SCAN

## HQ Scan

- Newly-developed 2D imaging improvement technology to enhance the contrast resolution and the whole image structure with better details
- Better visualization of the border and margin of space-occupying lesions, nodules and tumors in parenchymatous organs



**SonoScape**



ALL-ROUNDED  
RENOVATION BOOSTS  
LUCID IMAGING

EFFECTIVE ALGORITHMS  
LOOK CLOSER AND CLEARER WITH LOSSLESS ZOOM-IN

## HD Zoom

- Provides lossless zoom-in into hard-to-identify regions during normal mode
- Enables the magnification of one region to better focus on it
- Revelation of miniature details



**SonoScape**

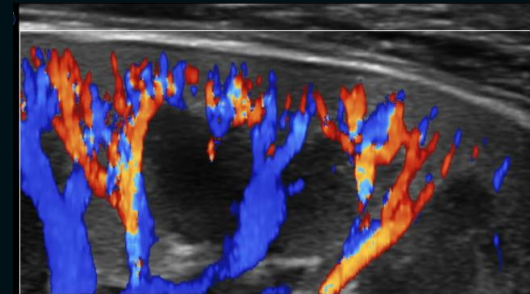
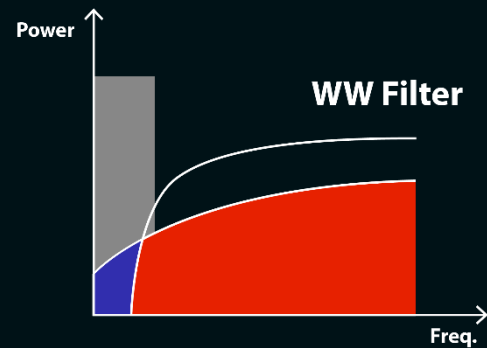
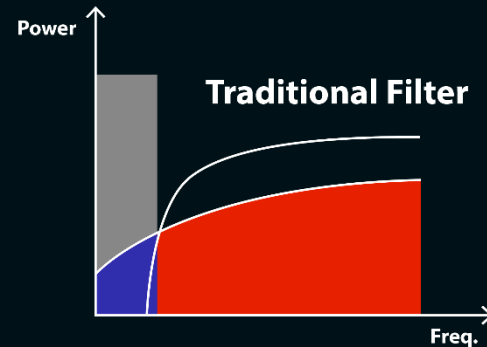


ALL-ROUNDED  
RENOVATION BOOSTS  
LUCID IMAGING

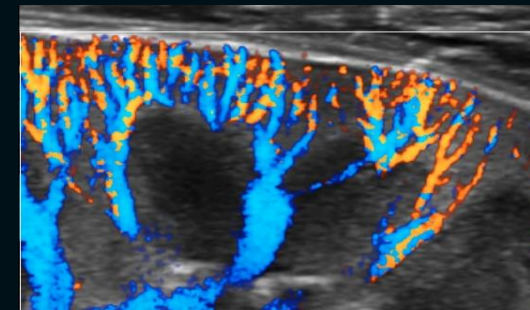
EFFECTIVE ALGORITHMS  
EASY FLOW VISUALIZATION FOR EVEN DIFFICULT SITUATIONS

## SR Flow

- High resolution flow that adopts a wide wall filter that can distinguish slow flow from tissue signal
- Enables a dynamic and vivid Doppler display with higher sensitivity while ensuring a realistic evidence for detection of slow flows



Color  
Renal Flow



SR Flow  
Renal Flow

**SonoScape**

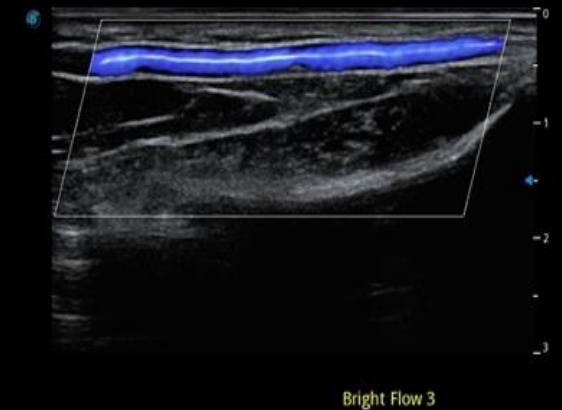
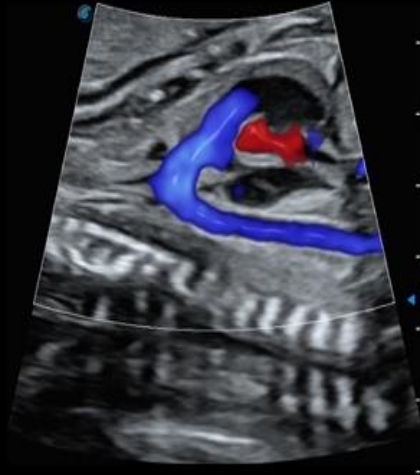


ALL-ROUNDED  
RENOVATION BOOSTS  
LUCID IMAGING

EFFECTIVE ALGORITHMS  
EASY FLOW VISUALIZATION FOR EVEN DIFFICULT SITUATIONS

## Bright Flow

- Provides 3D-like color Doppler flow without the need of using volume transducer
- Strengthens boundary definition of vessel walls
- Intuitive and easy visualization of blood flow structures with less blood flow artifact



**SonoScape**



ALL-ROUNDED  
RENOVATION BOOSTS  
LUCID IMAGING

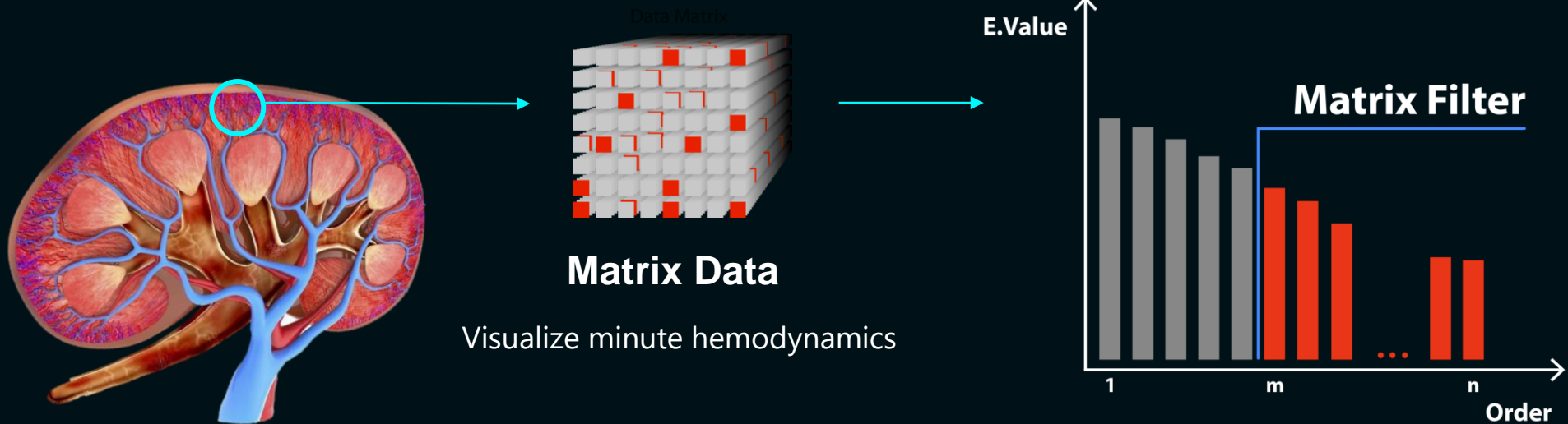
EFFECTIVE ALGORITHMS  
EASY FLOW VISUALIZATION FOR EVEN DIFFICULT SITUATIONS

# Micro F

**Visualizes minute hemodynamics by integrating temporal and spatial compound information**

Principles

- Adaptive Matrix E Filter effectively distinguishes tissue signals, artifact and low velocity blood flow
- Ultra-long Time Domain Algorithm helps to display low velocity blood flow stably and continuously



**SonoScape**



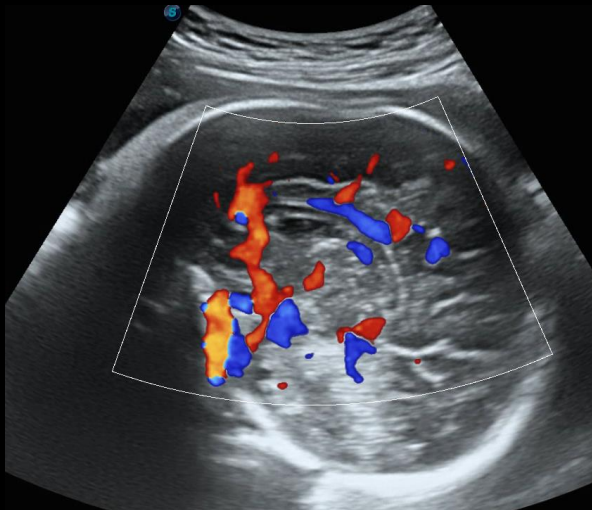


ALL-ROUNDED  
RENOVATION BOOSTS  
LUCID IMAGING

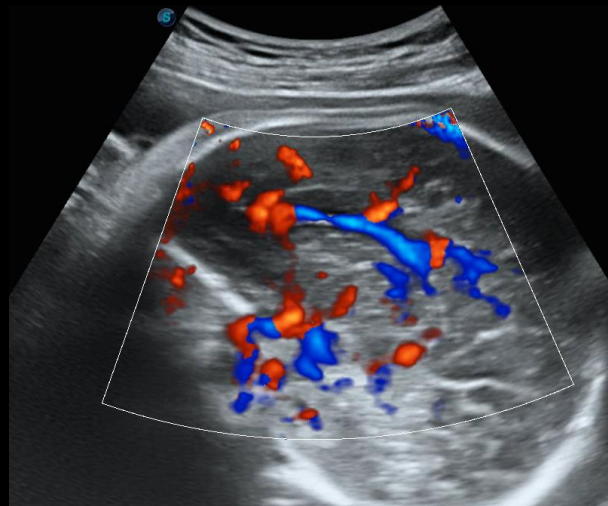
EFFECTIVE ALGORITHMS  
EASY FLOW VISUALIZATION FOR EVEN DIFFICULT SITUATIONS

# Micro F

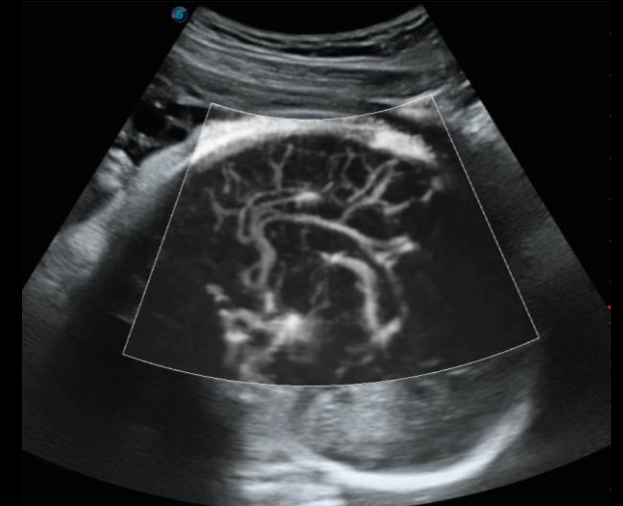
- Minute vessels visualization and slow flow detection
- Higher sensitivity, higher spatial resolution and minimal motion artifact
- More useful for fetal brain and fetal heart hemodynamics, placental insufficiency, rheumatic arthritis, etc



Color



SR Flow



Micro F

**SonoScape**



ALL-ROUNDED  
RENOVATION BOOSTS  
LUCID IMAGING

EFFECTIVE ALGORITHMS  
LIFELIKE PRESENTATION WITH ADVANCED RENDERING

## 3D $\mu$ - Scan<sup>+</sup>

- Presents the fetal volume image in a lifelike way with more details
- The upgrade of processors also boosts rendering capacity and efficiency



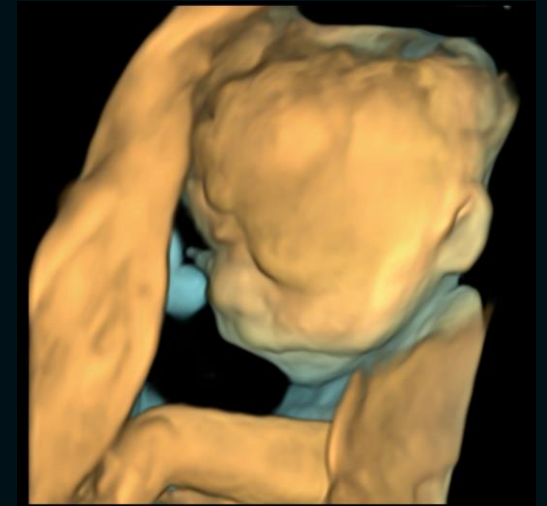
Grad.Light



Surface

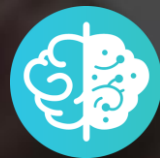


S-Live



S-Depth

**SonoScape**



Intelligent Solution at Your  
Fingertips

**SonicScape**

# 02

Intelligent Solution at Your Fingertips

---



## Auto Calculation

- S-Endo.
- S-Follicle
- Auto OB
- Auto NT
- Auto Bladder
- Auto EF
- Auto IMT

## Auto Acquisition and Smart Analysis

- S-Fetus
- S-MSK
- S-Thyroid

## Auto Optimization

- Auto Face
- S-Spine
- Auto C
- Auto PW



INTELLIGENT SOLUTION AT  
YOUR FINGERTIPS

AUTO CALCULATION  
EMPOWERS HIGHLY-EFFICIENT EXAMS

## S-Endometrium

Auto Endometrium Recognition and  
Thickness Measurement



## S-Follicle

Auto Follicle Recognition and  
Size Measurement



- Reduces the steps for operation to a minimum level while achieving accurate results
- Useful for IVF procedure and menstrual monitoring

**SonoScape**



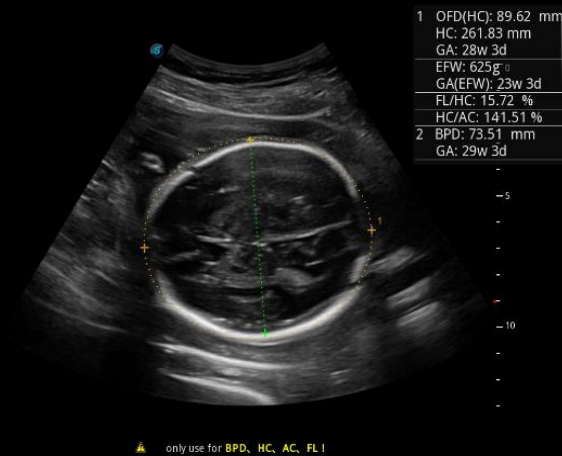


INTELLIGENT SOLUTION AT  
YOUR FINGERTIPS

AUTO CALCULATION  
EMPOWERS HIGHLY-EFFICIENT EXAMS

## Auto OB

Auto Fetal Biometry in BPD/HC/AC/FL/HL



## Auto NT

Auto Nuchal Translucency Measurement



- Recognizes and contours automatically the border of anatomical structures
- Achieves high efficiency with measurement results displayed in a second

**SonoScape**

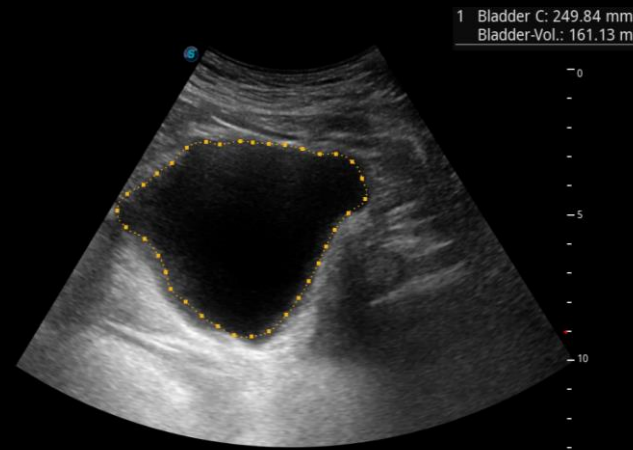


INTELLIGENT SOLUTION AT  
YOUR FINGERTIPS

AUTO CALCULATION  
EMPOWERS HIGHLY-EFFICIENT EXAMS

# Auto Bladder

Auto Bladder Volume Measurement



- One key bladder wall recognition and tracing and volume measurement
- Achieves high efficiency and accuracy in a second

**SonoScape**



INTELLIGENT SOLUTION AT  
YOUR FINGERTIPS

PLANE ACQUISITION  
REDEFINE THE WAY OF ULTRASOUND EXAMS

B  
FPS 35  
D/G 180/8  
GN 140  
I/P 0/40  
PWR 100  
FRQ 3.8-5.8  
D 11.0cm  
μS 5  
PHI  
Z 0.9



## S-Fetus

Automates Obstetric Ultrasound Work-Flow

- Automatic standard plane acquisition and measurement with one click
- Available on BPD/AC/HC/FL
- Automatic biometry and reporting
- 10000+ cases verified 98% accuracy

**SonoScape**



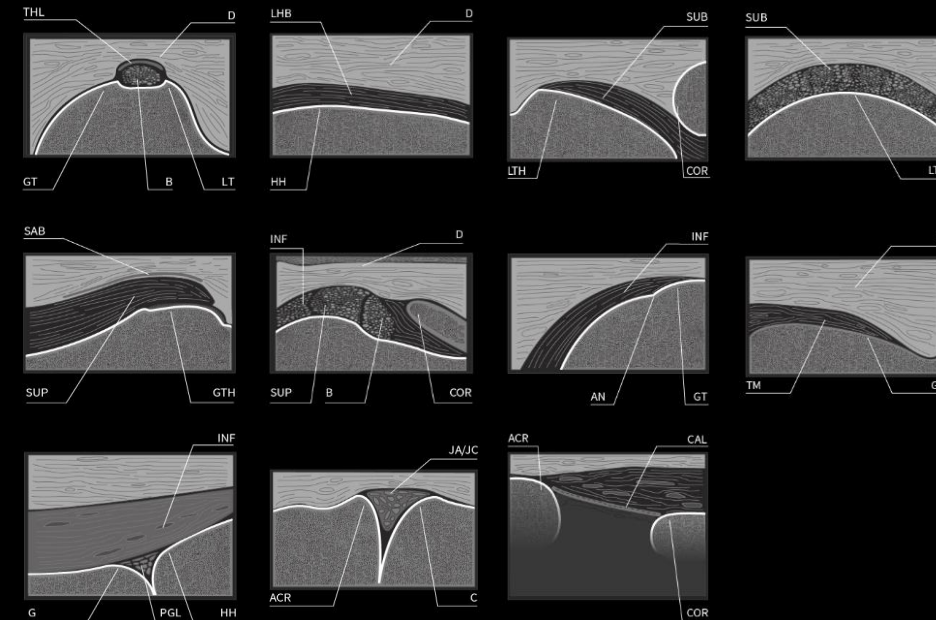
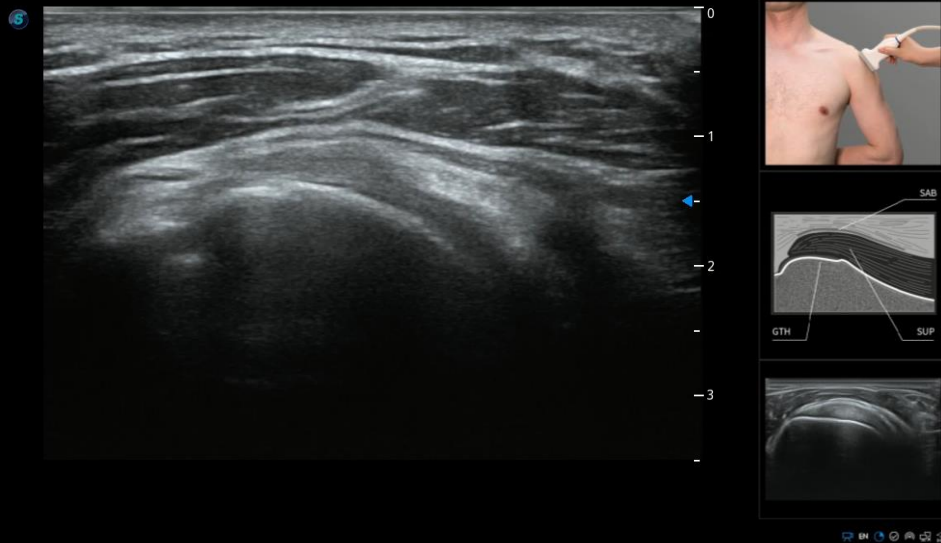
INTELLIGENT SOLUTION AT  
YOUR FINGERTIPS

# PLANE ACQUISITION REDEFINE THE WAY OF ULTRASOUND EXAMS

## S-MSK

Smart MSK Scanning Tutorial

- Acquires standard plane automatically under the guidance of anatomic diagram display
- Automated annotation of different anatomic structures
- Available for shoulder joint and 11 standard scan planes currently



**SonoScape**



INTELLIGENT SOLUTION AT  
YOUR FINGERTIPS

ENHANCED OPTIMIZATION  
REVEALS TRUE ANATOMY WITH EASE

## S-Spine

Automatic Recognition and Imaging of Fetal Spine

- Intuitively presents optimized 3D view of fetal spine with the capability of automatic detection of fetal head
- Obstruction removal to show the lifelike and clear fetal spine
- No necessity of editing VOI box and cutting line in 3D pre-activation



**SonoScape**





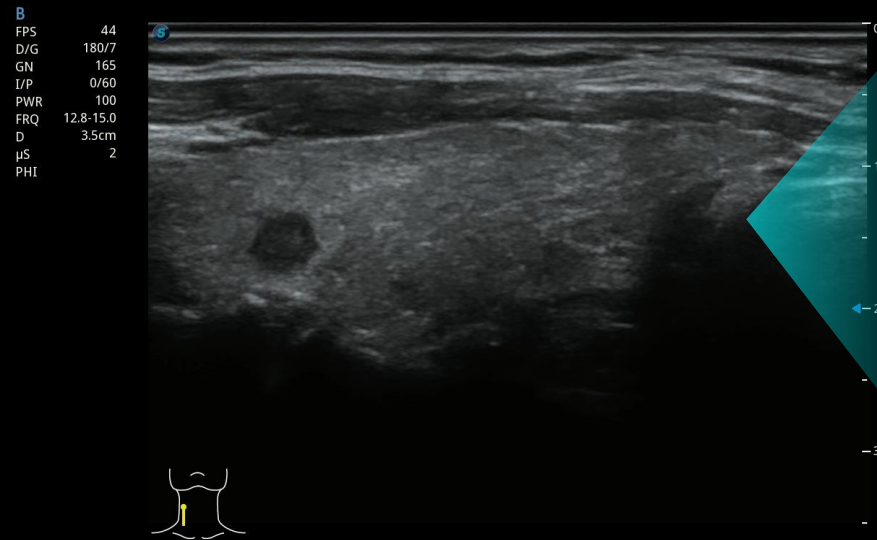
INTELLIGENT SOLUTION AT  
YOUR FINGERTIPS

SMART ANALYSIS  
RELIABLE ASSISTANTS IN SPECIALIZED TESTS

# S-Thyroid

Auto TI-RADS Analysis on Thyroid

- Automatically detects lesion and contours border for analysis
- Lists the characteristics of the nodules and performs measurements
- Adopts widely used guidelines TI-RADS for classification and reporting



Tumor\_H: 4.24 mm  
Tumor\_W: 4.33 mm  
Tumor\_Area: 0.14 mm<sup>2</sup>

Shape	
Wider than tall	0
Margin	
Lobulated or irregular	2
Echogenicity	
Hypoechoic	2
Echogenic Foci	
None or large comet tail artifacts	0
Composition	
Solid or almost completely solid	2
Total Points:	6
TI-RADS:	TR4
Advice:	
>=1.0cm	Follow
>=1.5cm	FNA

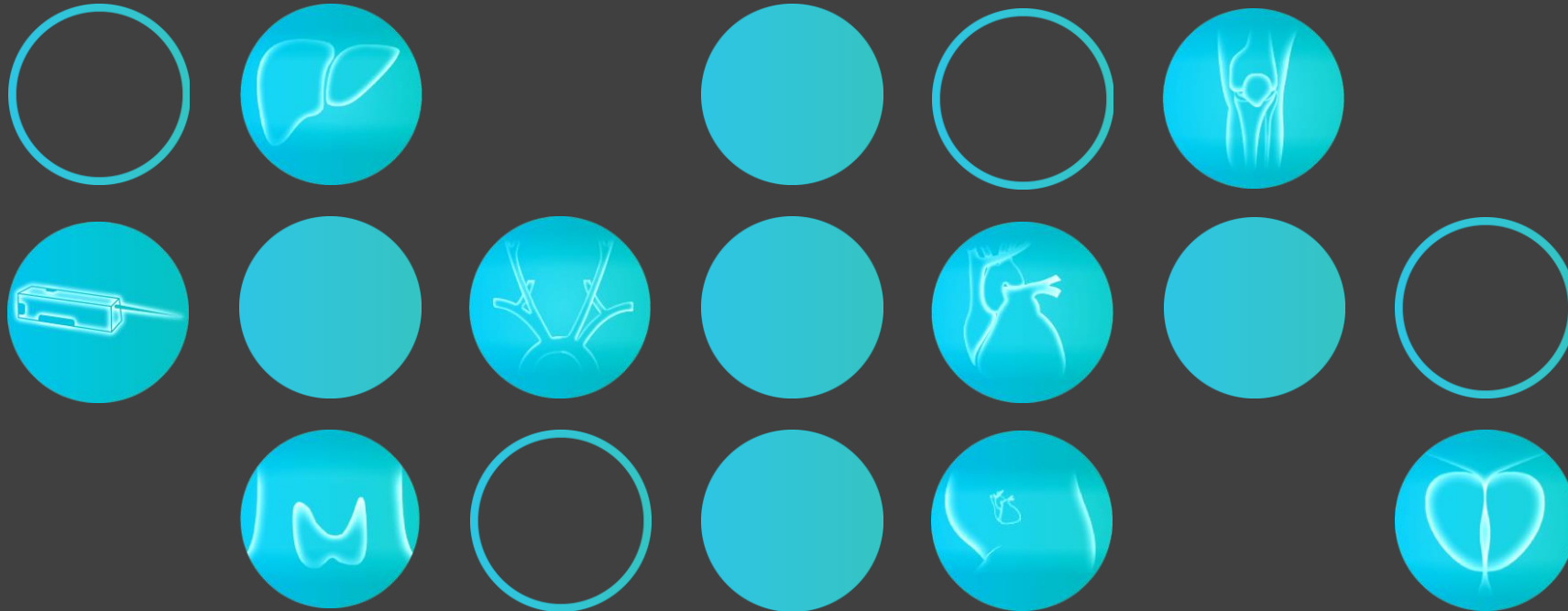
**SonicScape**



Talented Features Inspire More  
Applications

**SonoScape**

# Talented Features Inspire More Applications



ABDOMEN | OB/GYN | SMALL PARTS | MSK | VASCULAR | CARDIAC | UROLOGY |  
INTERVENTION

# 03

Talented Features Inspire More Applications

---

**SonoScape**

## VASCULAR



- Composite Material Linear
- SR Flow
- Bright Flow
- Micro F
- Auto C (Smart Doppler)
- Auto IMT
- Sono Assistant

## SMALL PARTS



- Composite Material Linear
- HQ Scan
- Micro F
- Panoramic Imaging
- S-Thyroid
- Breast CEUS
- Strain Elastography

## OB/GYN



- Single Crystal Convex
- Volumetric Abdominal and TV probes
- Bright Flow
- Micro F
- S-Fetus
- Auto NT/Auto OB
- Auto Face
- S-Spine
- Color 3D
- S-Live/ S-Live Silhouette/S-Live Contour
- VCI with FreeVue
- STIC

## MSK



- High freq. Linear
- Panoramic/C-Panoramic
- S-MSK
- Micro F

## ABDOMEN



- Single Crystal Convex
- HQ Scan
- Bright Flow
- CEUS+
- Mix Mode/MFI/ MFI-Time

## 03

Talented Features Inspire More Applications

---

### CARDIAC



- Single Crystal Phased Array
- G-MQA (Strain/Strain Rate )
- R-MQA (TDI with QA)
- Stress Echo
- Auto EF

### UROLOGY



- BCC9-5 for Transrectal scanning and Biopsy
- BCL10-5 for Transperineal Biopsy
- Auto Bladder
- Prostate CEUS
- Biopsy Grid

### INTERVENTION



- Full Range of Intraoperative Probes (T, I, L shapes)
- Micro-convex Probe for intercostal scanning
- CEUS+
- Vis-Needle
- Beam Steering



TALENTED FEATURES  
INSPIRE MORE  
APPLICATIONS

ADVANCED ABD SOLUTIONS  
ELEVATED CAPABILITY READY FOR MORE CHALLENGES



3C-A



C613



C322

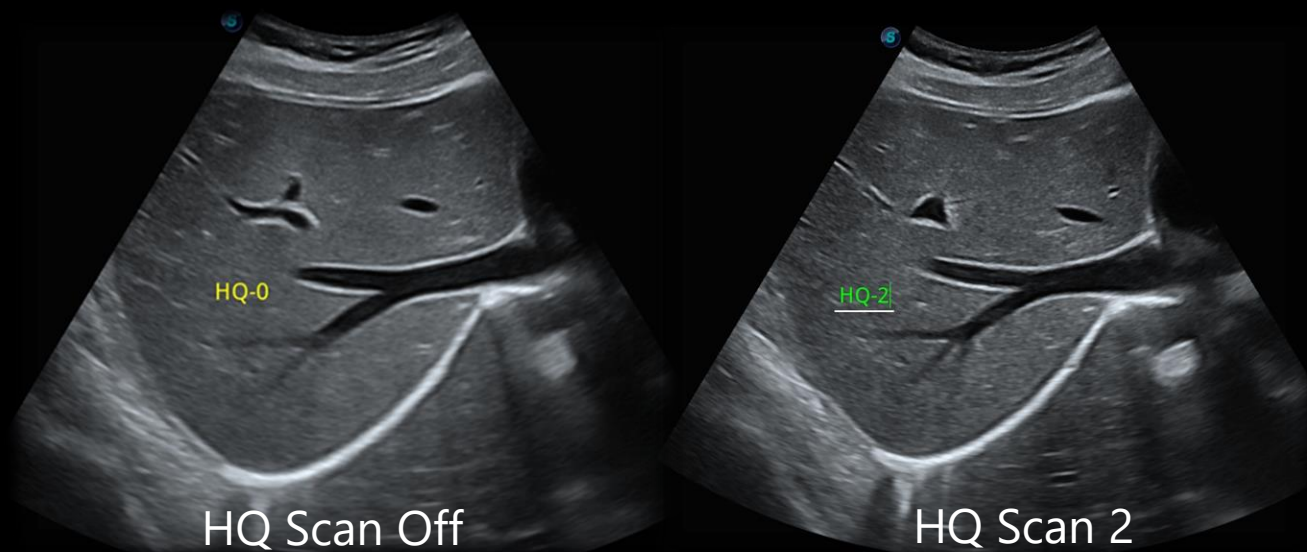




TALENTED FEATURES  
INSPIRE MORE  
APPLICATIONS

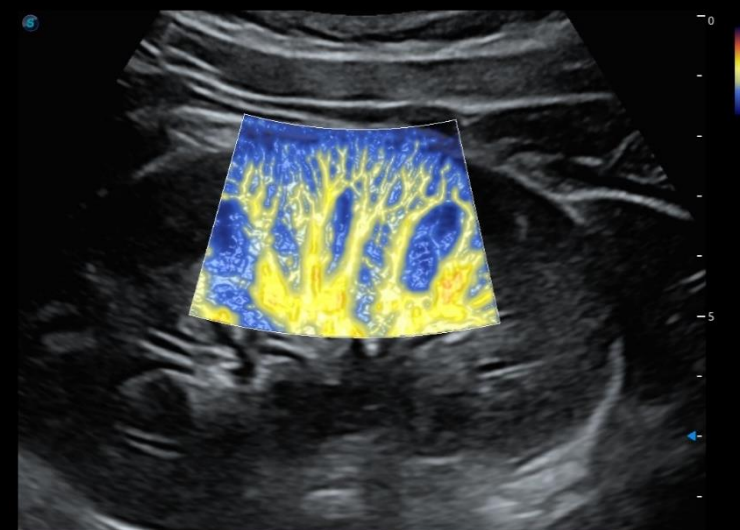
ADVANCED ABD IMAGING SOLUTIONS  
ELEVATED CAPABILITY READY FOR MORE CHALLENGES

## HQ Scan



- 2D contrast resolution enhancement technology
- Improved image structure with better details
- Better visualization of border and margin of lesions, nodules and tumors

## Bright Flow



- 3D visualization of color Doppler flow
- Intuitive blood flow display, especially for boundary definition of tiny vessels

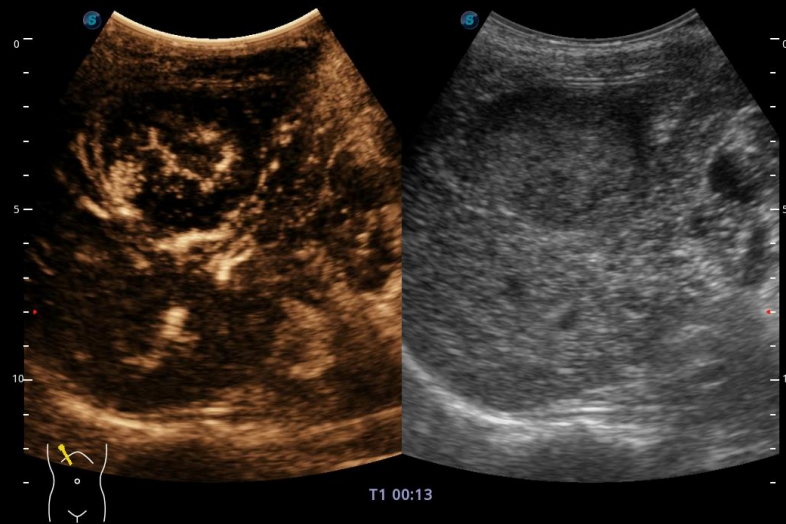
**SonoScape**



TALENTED FEATURES  
INSPIRE MORE  
APPLICATIONS

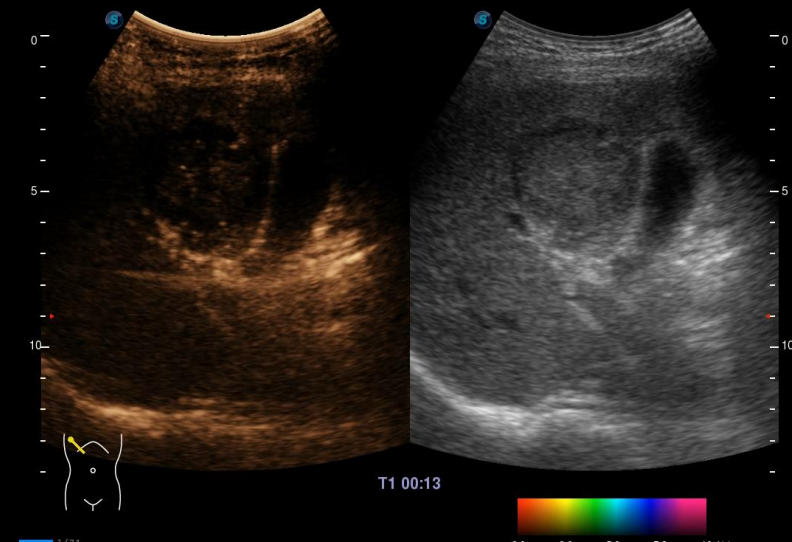
ADVANCED ABD IMAGING SOLUTIONS  
ELEVATED CAPABILITY READY FOR MORE CHALLENGES

## MFI



- Amplifies Temporal Perfusion Signal
- Accumulates signal of contrast agents through time for better view of tiny vessel perfusion

## MFI TIME



- Color Codes Arrival Time of Contrast Agents
- Intuitively show the different arrival time when the contrast agent reaches different tissue areas

**SonoScape**



TALENTED FEATURES  
INSPIRE MORE  
APPLICATIONS

ADVANCED THYROID/ BREAST IMAGING FEATURES  
STRIVE FOR A COMPREHENSIVE SOLUTION FOR  
THYROID/ BREAST EVALUATION

12L-B



9L-A



12L-A

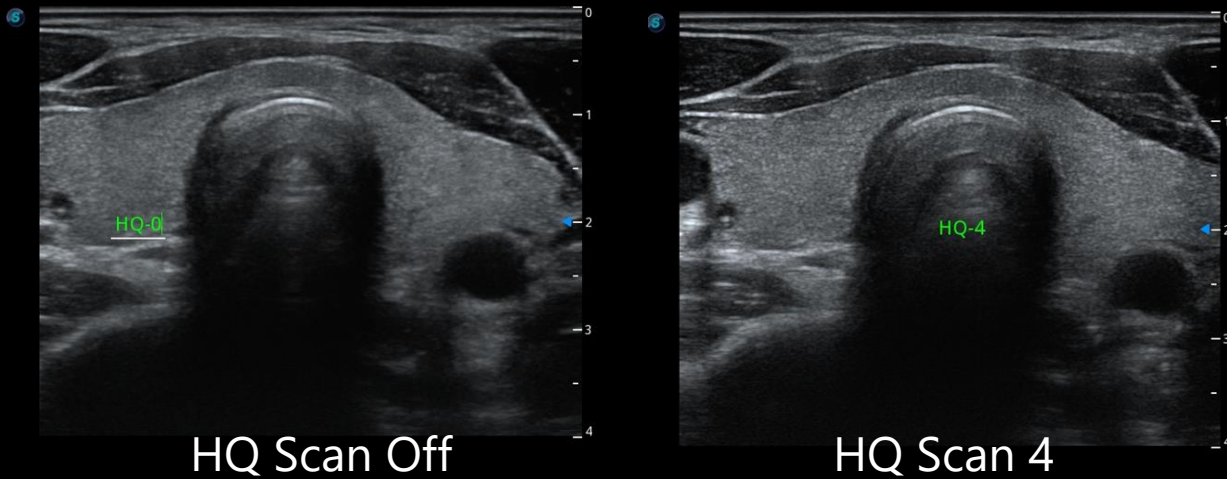




TALENTED FEATURES  
INSPIRE MORE  
APPLICATIONS

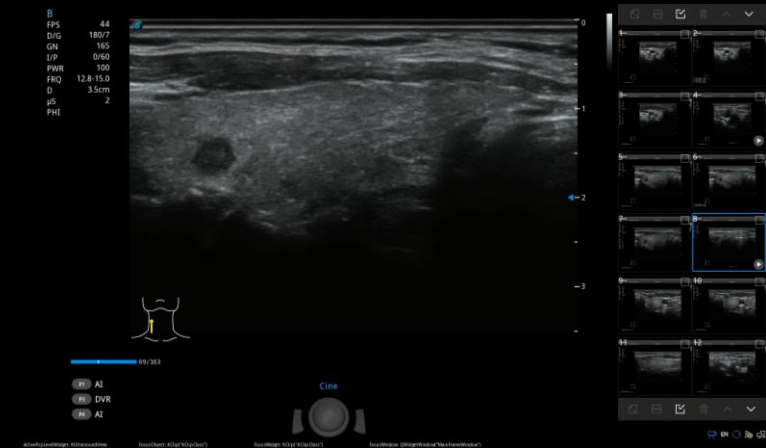
ADVANCED THYROID/ BREAST IMAGING FEATURES  
STRIVE FOR A COMPREHENSIVE SOLUTION FOR  
THYROID/ BREAST EVALUATION

## HQ Scan



- 2D contrast resolution enhancement technology
- Improved image structure with better details
- Better visualization of border and margin of lesions, nodules and tumors

## S-Thyroid



- Quick auto contour for thyroid lesion boundaries and auto measurement for lesion size
- Supports TI-RADS lexicon classification
- Effectively reduces the unnecessary biopsy rate for patient-centered purpose

**SonoScape**



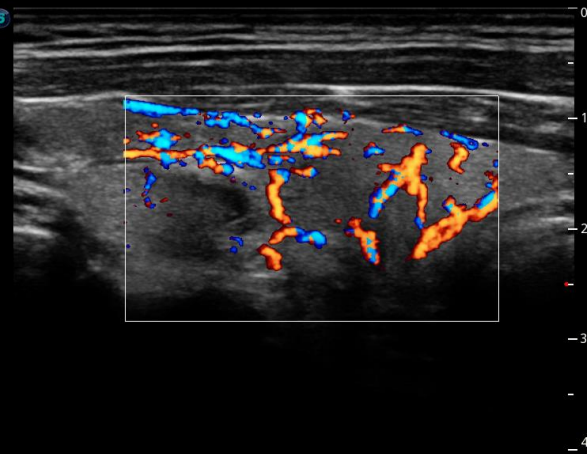


TALENTED FEATURES  
INSPIRE MORE  
APPLICATIONS

# ADVANCED THYROID/ BREAST IMAGING FEATURES STRIVE FOR A COMPREHENSIVE SOLUTION FOR THYROID/ BREAST EVALUATION

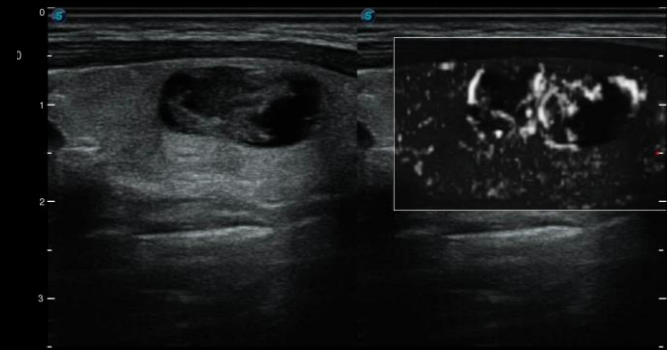
## SR Flow

- More easily filters out tissue signal and artifacts and reserves blood flow signals
- Higher blood sensitivity and realistic hemodynamics



## Micro F

- An innovative technique that effectively distinguishes minute vessels and low velocity flows
- Detailed views of blood flow to evaluate vascularity of lesions, nodules and tumors in small parts



**SonoScape**

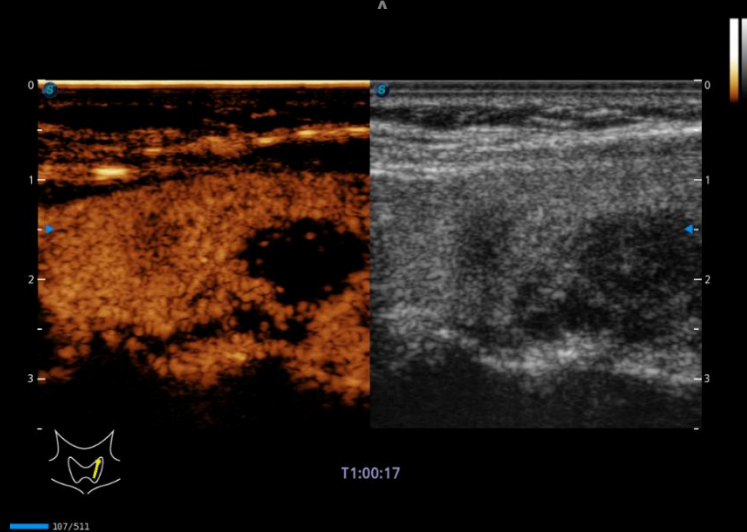


TALENTED FEATURES  
INSPIRE MORE  
APPLICATIONS

ADVANCED THYROID/ BREAST IMAGING FEATURES  
STRIVE FOR A COMPREHENSIVE SOLUTION FOR  
THYROID/ BREAST EVALUATION

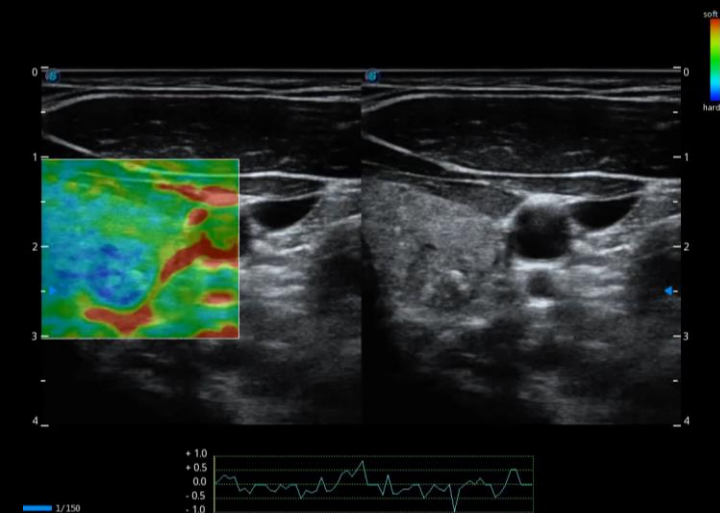
## SMP CEUS

Supports Thyroid and Breast CEUS with 12L-A and 9L-



- Higher sensitivity with both 2nd harmonic and non-linear fundamental
- Precise transmission control for a higher CTR (Contrast to Tissue Ratio)
- Non-linear fundamental CEUS has greater contribution for penetration

## Strain Elastography



- Strain elastography for tissue stiffness evaluation
- Professional semi-quantitative analysis with strain ratio indicating tissue elasticity

**SonoScape**





TALENTED FEATURES  
INSPIRE MORE  
APPLICATIONS

ADVANCED OB/GYN IMAGING SOLUTIONS  
ATTENTIVE CARE ENSURES HEALTHY FETAL  
DEVELOPMENT

3C-A



VC6-2



6V3



6V7



VE9-5



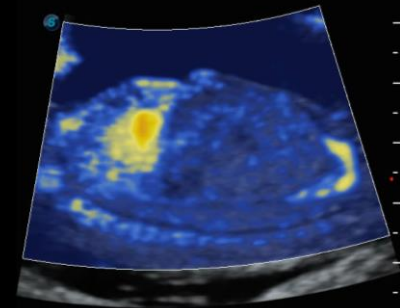
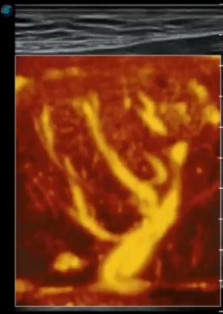
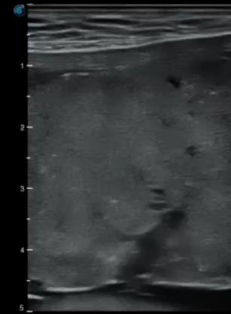
6V3A





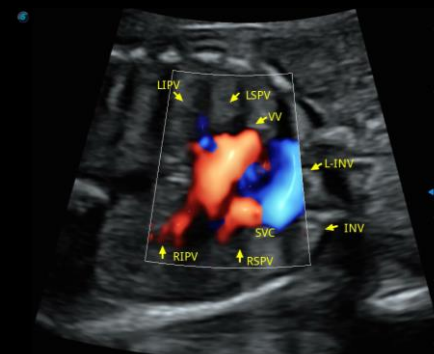
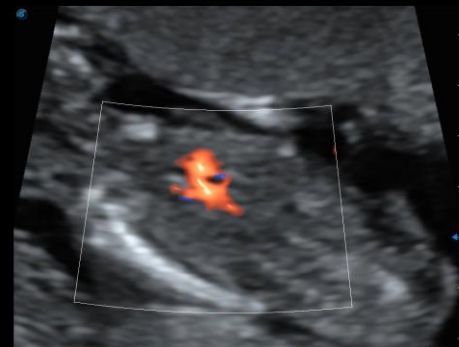
TALENTED FEATURES  
INSPIRE MORE  
APPLICATIONS

ADVANCED OB/GYN IMAGING SOLUTIONS  
ATTENTIVE CARE ENSURES HEALTHY FETAL  
DEVELOPMENT



**Micro F**

**Bright  
Flow**

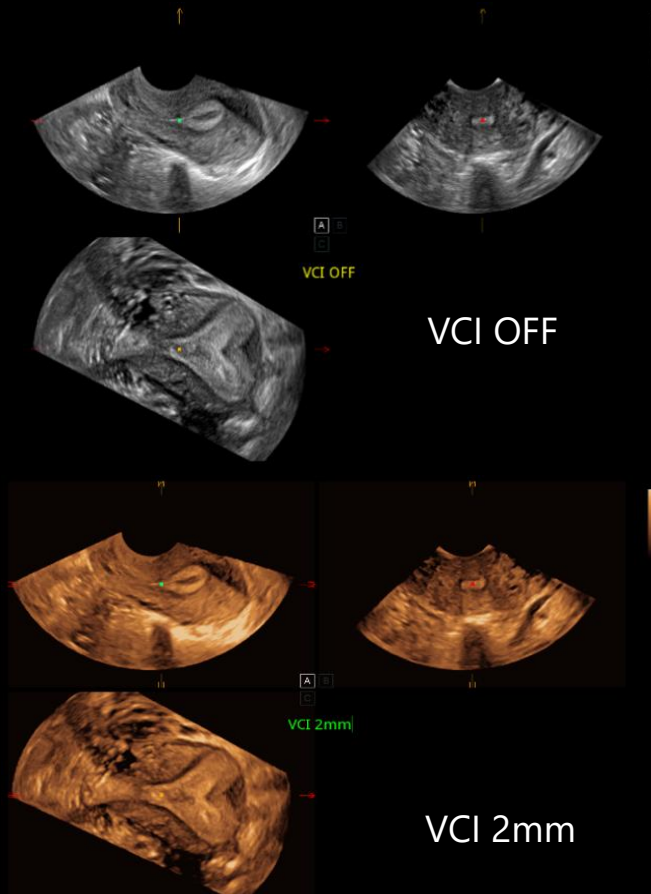


**SonoScape**



TALENTED FEATURES  
INSPIRE MORE  
APPLICATIONS

ADVANCED OB/GYN IMAGING SOLUTIONS  
ATTENTIVE CARE ENSURES HEALTHY FETAL  
DEVELOPMENT

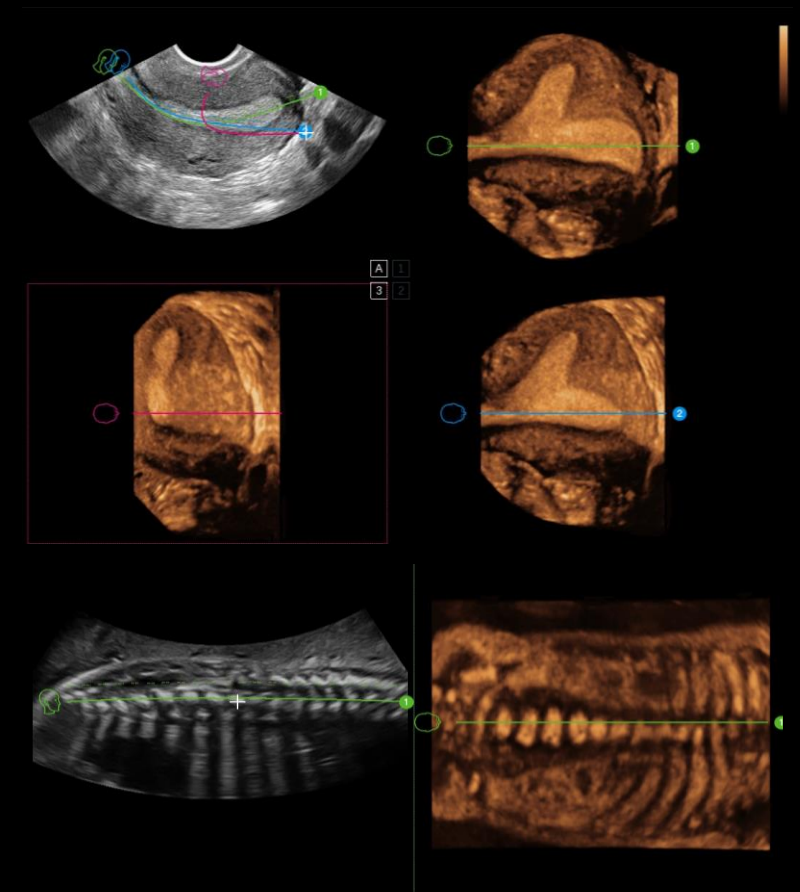


## VCI

- Applies a slice with a certain thickness and rendering techniques on volume data to increase contrast resolution

## FreeVue

- Acquire any plane from 3D/4D volume data by simply defining a line in any shape. This feature makes it possible to view integral irregularly shaped structures not available in 2D imaging



**SonoScape**



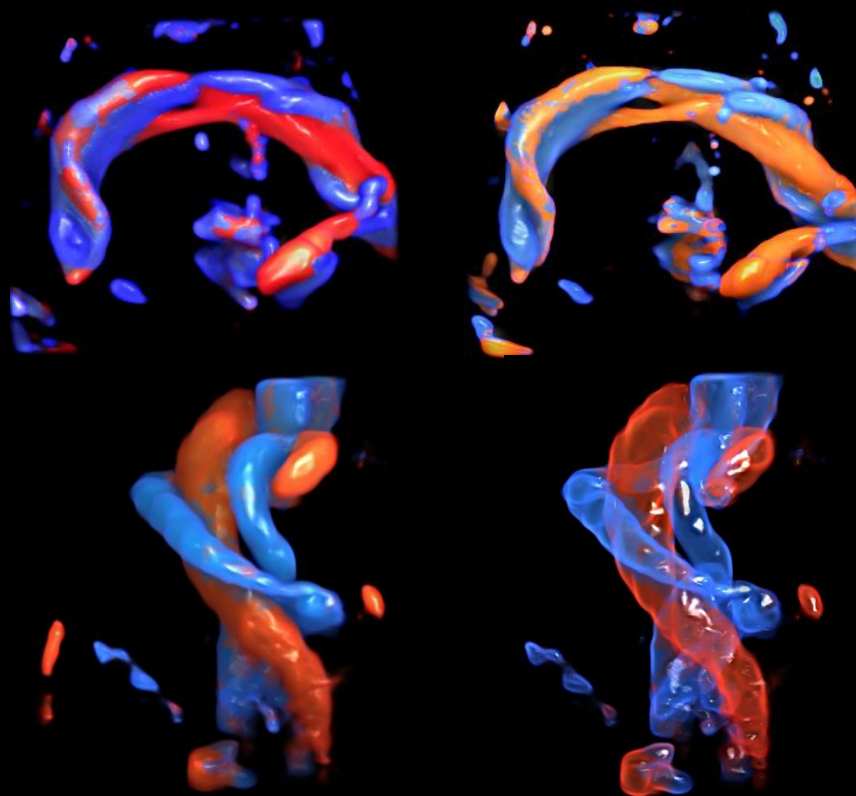
TALENTED FEATURES  
INSPIRE MORE  
APPLICATIONS

ADVANCED OB/GYN IMAGING SOLUTIONS  
ATTENTIVE CARE ENSURES HEALTHY FETAL  
DEVELOPMENT

## Color 3D

### S-Live Flow

- More intuitive and more realistic blood flow imaging
- Better spatial resolution of vascular networks
- Simultaneously display the speed and direction of the flow through color changes



### S-Live Flow Silhouette

- Display transparency and border of 3D blood vessels
- It enables to see the shape of flow even behind the vessels which show more comprehensive view of vascular anatomy

**SonoScape**





TALENTED FEATURES  
INSPIRE MORE  
APPLICATIONS

ADVANCED OB/GYN IMAGING SOLUTIONS  
ATTENTIVE CARE ENSURES HEALTHY FETAL  
DEVELOPMENT



## S-Live Pro

- S-Live Pro is consist of **S-Live**, **S-Live Silhouette** and **S-Live Contour**.
- Improved **S-Live** rendering mode by enhancing virtual lighting effect (especially backlight) and bringing a high-quality stereoscopic image of natural shadow and skin texture
- **S-Live Silhouette** rendering mode to see through the surface and clearly delineates the outlines of bones, organs, cavities, vessel walls and other internal structures.

The clinician can adjust S-Live Silhouette percentage with controlling threshold for visualizing the region of interest.

- By applying **S-Live Contour**, it is possible to visualizes interior and exterior structure and provide additional information for detailed anatomic evaluation to diagnose abnormalities.

**SonoScape**



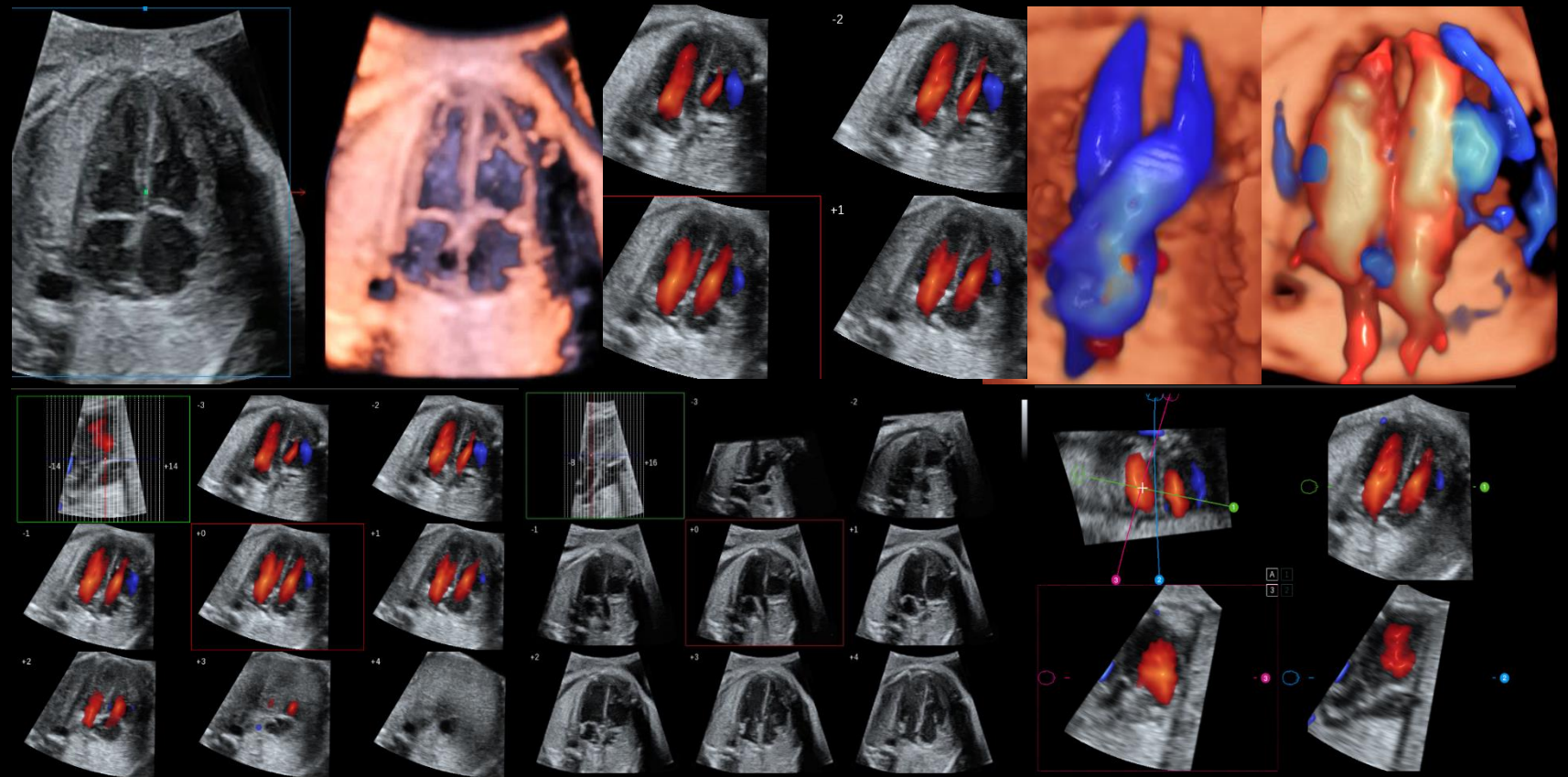
TALENTED FEATURES  
INSPIRE MORE  
APPLICATIONS

ADVANCED OB/GYN IMAGING SOLUTIONS  
ATTENTIVE CARE ENSURES HEALTHY FETAL  
DEVELOPMENT

## STIC

Spatio-temporal Image  
Correlation

- Fast acquisition with high frame in 8-12s
- Moving detection of fetal anatomy structures
- Supports SR Flow and Bright Flow
- Supports Multi-Slice Viewing and FreeVue Viewing
- Helpful diagnostic tool for fetal congenital heart disease



**SonoScape**





TALENTED FEATURES  
INSPIRE MORE  
APPLICATIONS

## ADVANCED VASCULAR SOLUTIONS PROFESSIONAL TOOLKITS FOR VASCULAR HEALTH EVALUATION

12L-B



9L-A



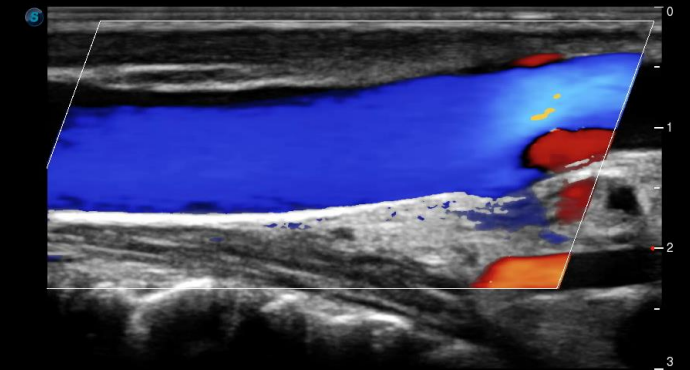
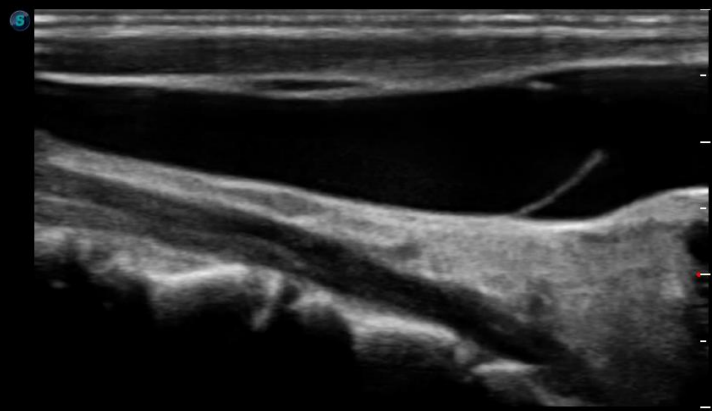
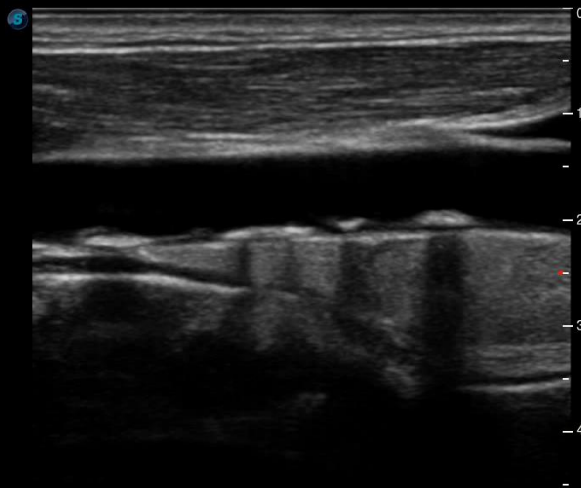
C613





TALENTED FEATURES  
INSPIRE MORE  
APPLICATIONS

# ADVANCED VASCULAR SOLUTIONS PROFESSIONAL TOOLKITS FOR VASCULAR HEALTH EVALUATION



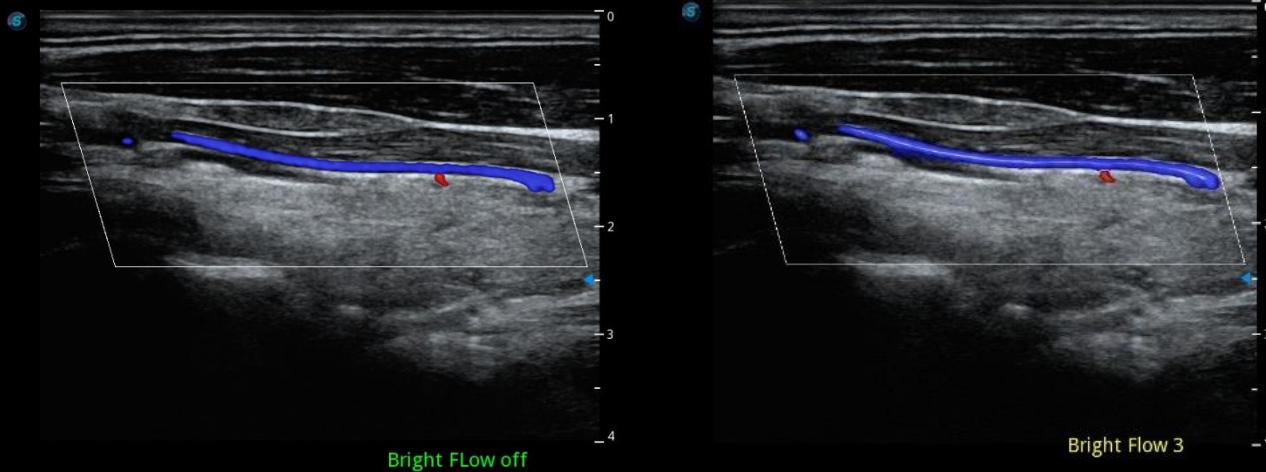
**SonoScape**



TALENTED FEATURES  
INSPIRE MORE  
APPLICATIONS

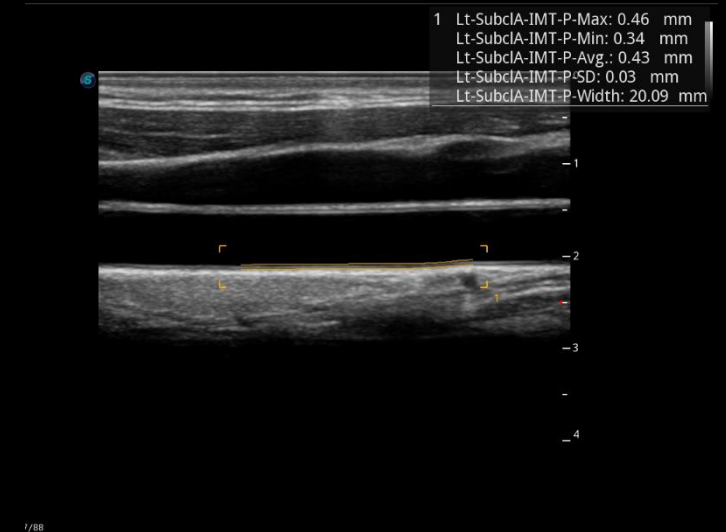
ADVANCED VASCULAR SOLUTIONS  
PROFESSIONAL TOOLKITS FOR VASCULAR HEALTH EVALUATION

## Bright Flow



- 3D visualization of color Doppler flow
- Intuitive blood flow display, especially for boundary definition of tiny vessels

## Auto IMT



- Easy measurement of anterior and posterior intima-media thickness by drawing a ROI box
- Provides potentially more consistent results than measuring manually



TALENTED FEATURES  
INSPIRE MORE  
APPLICATIONS

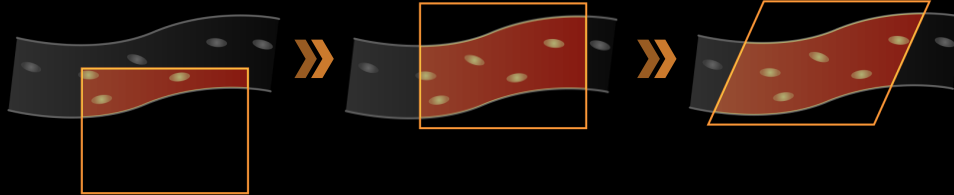
# ADVANCED VASCULAR SOLUTIONS PROFESSIONAL TOOLKITS FOR VASCULAR HEALTH EVALUATION

## Auto C

Original ROI Box

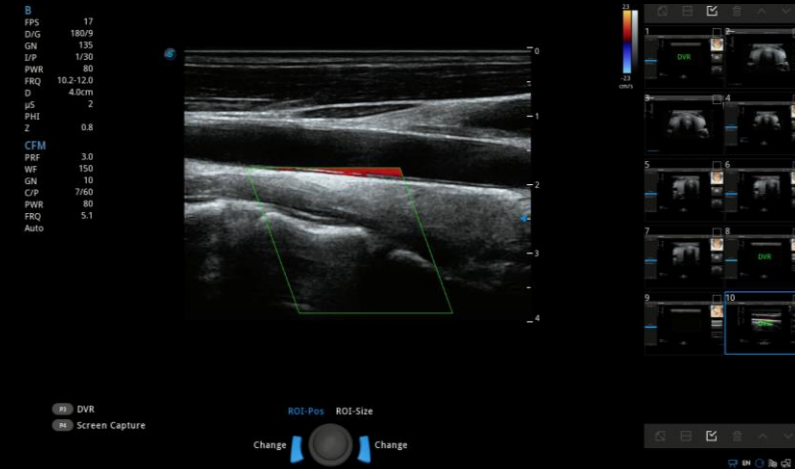
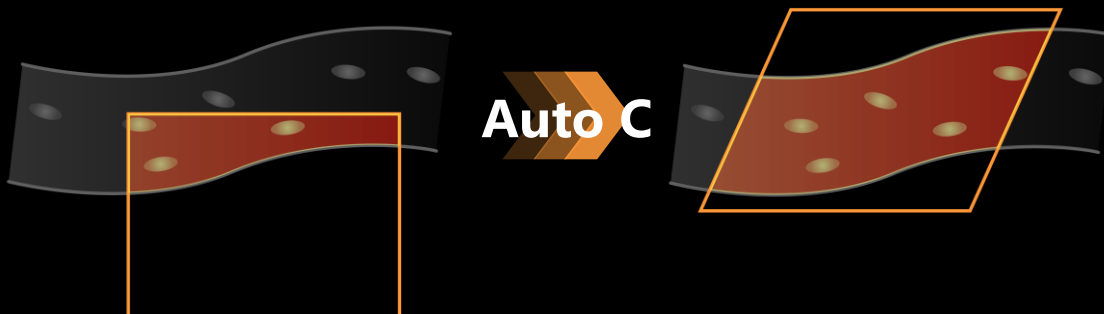
ROI Box Positioning

ROI Box Steering



BEFORE

AFTER



- Automatically detects the Doppler signal of vessels and adjusts ROI box and steering angle
- Optimizes intuitively color Doppler performance

**SonoScape**



TALENTED FEATURES  
INSPIRE MORE  
APPLICATIONS

ADVANCED VASCULAR SOLUTIONS  
PROFESSIONAL TOOLKITS FOR VASCULAR HEALTH EVALUATION

# Sono Assistant

(for Vascular Application)

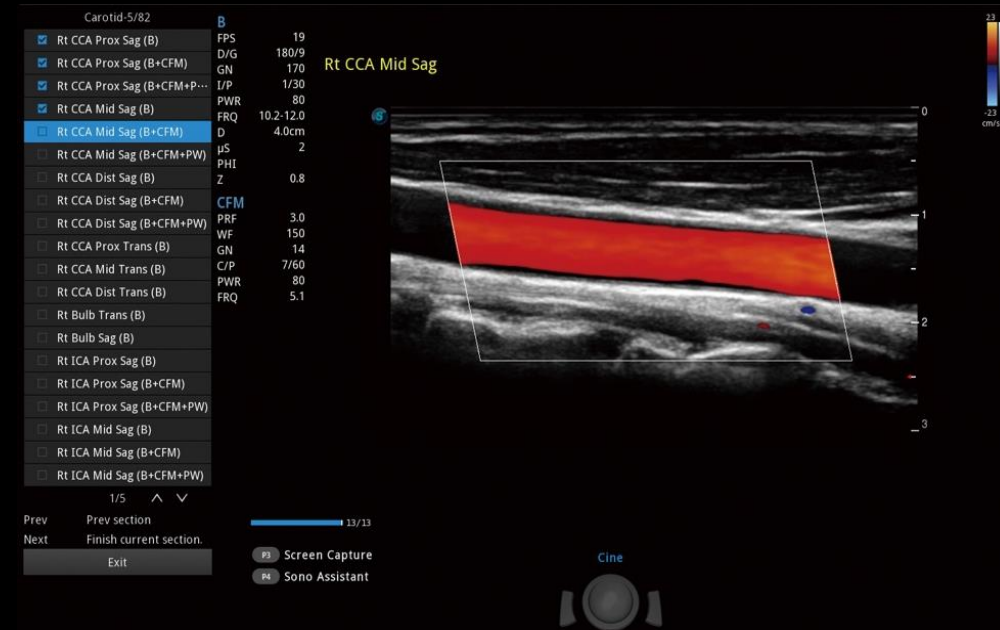
## Scanning Sequences Standardization and Auto Workflow

## Vascular Protocols include:

- Completed Carotid / General Carotid
- LEA/ LEV (DVT)/LEV (Reflux)

Automation features include:

- Automatic insertion of comments
- Automatic setup of imaging controls and modes
- Automatic steering in color and pulsed Doppler modes
- Initiation and auto completion of required measurements
- Intuitive advancement to the next step in an exam



- Automate the ultrasound scanning sequence
- Increase productivity and standardize documentation
- Significantly reduces keystrokes and exam time

# SonoScape

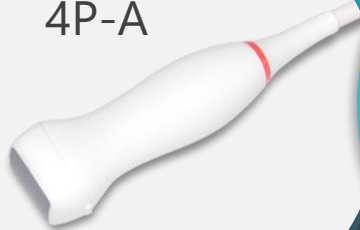




TALENTED FEATURES  
INSPIRE MORE  
APPLICATIONS

ADVANCED CARDIAC SOLUTIONS  
MAKES EVERY PULSE INFORMATIVE

4P-A



7P-A



8P1



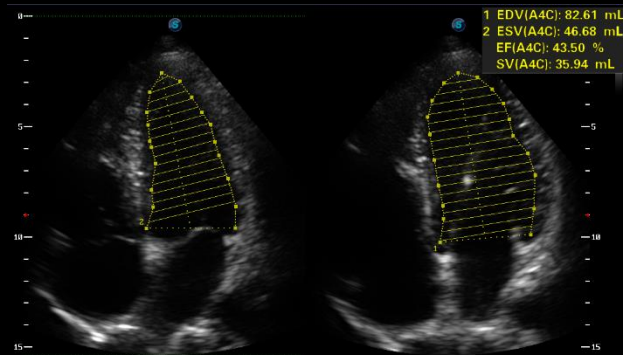




TALENTED FEATURES  
INSPIRE MORE  
APPLICATIONS

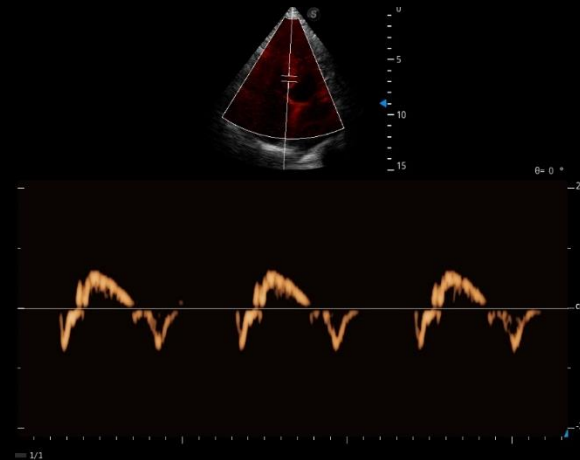
ADVANCED CARDIAC SOLUTIONS  
MAKES EVERY PULSE INFORMATIVE

## Auto EF



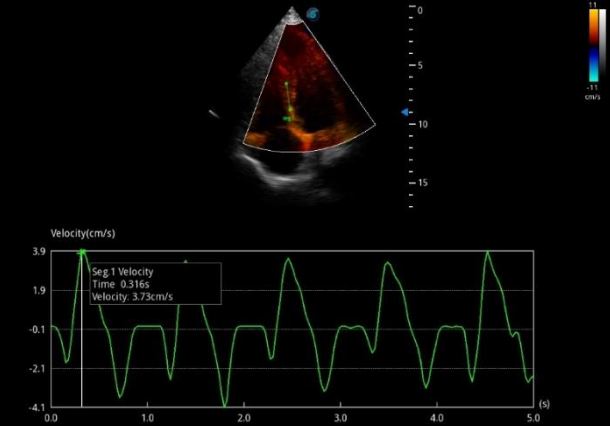
- Automatic ejection fraction calculation based on left ventricular wall tracing and Simpson's rule
- Save time and efforts compared with manual measurement

## TDI with PW



- Uses myocardial Doppler frequency shifts to quantify myocardial tissue motion
- Complete TDI imaging modes

## TDI with QA (G-MQA)



- Dedicated quantification tool for TDI velocity, strain, strain rate, time to peak analysis
- Up to 20 of interest segments

**SonoScape**



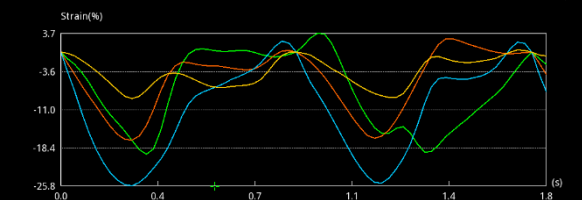
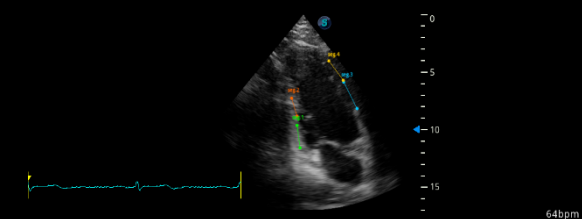
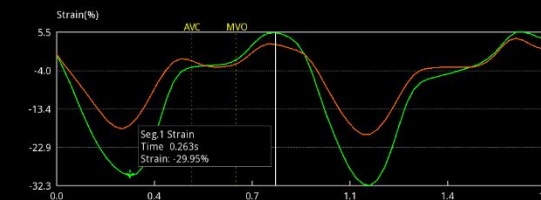
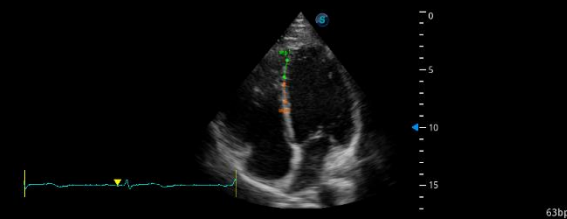
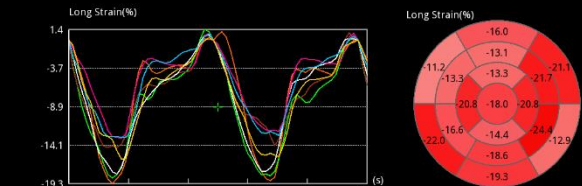
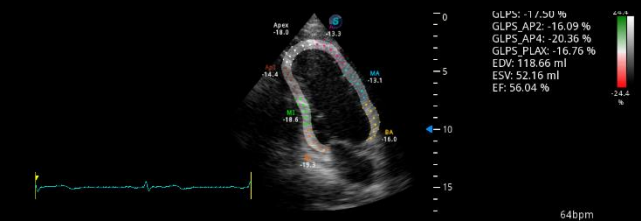
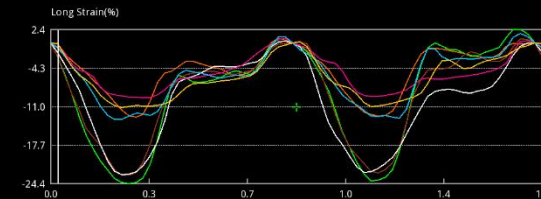
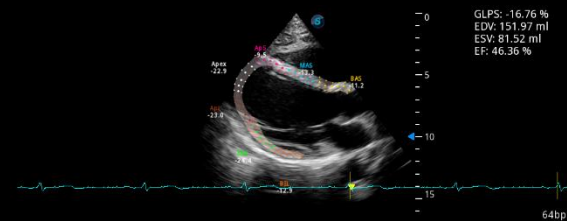
TALENTED FEATURES  
INSPIRE MORE  
APPLICATIONS

ADVANCED CARDIAC SOLUTIONS  
MAKES EVERY PULSE INFORMATIVE

## MQA

Tissue Tracking for Precise Evaluation of  
Myocardial Movement

- Precise left ventricular wall motion detection with real-time sensitive tissue tracking
- Global and regional quantitative analysis on myocardial movement
- Multiple quantification analysis provided (Velocity/Displacement/Strain/Strain Rate/Volume/Bull's Eye Diagram)



**SonoScape**

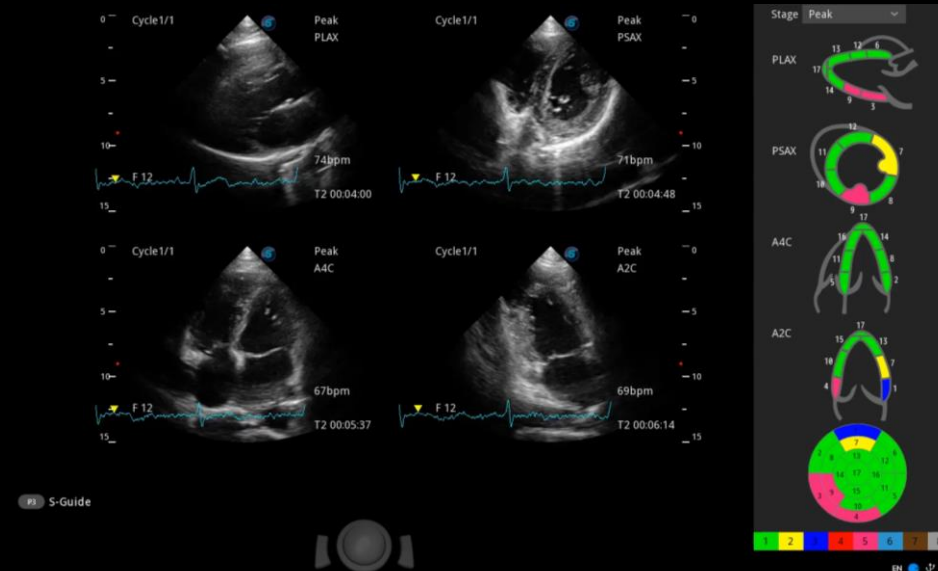


TALENTED FEATURES  
INSPIRE MORE  
APPLICATIONS

ADVANCED CARDIAC SOLUTIONS  
MAKES EVERY PULSE INFORMATIVE

# Stress Echo

- Customized versatile exercise and pharmacologic protocols
- 7-point system or 5-point system can be set
- 16 or 17 segments can be set
- Supports bull's-eye diagram and WMS result display and reporting
- Supports Left ventricle opacification



The screenshot displays the SonoScape System Settings interface for Stress Echo. The interface is divided into several sections:

- General:** Includes fields for Protocol Name (Exercise-2x4), Number Of Stages (2), Number Of Views (4), WMS Segment Type (17), and WMS Mechanism (7). There are checkboxes for Auto start exam timer and Auto start WMS.
- Advanced Function:** Includes a table for setting up the exam protocol.
- Stress Echo Report Display Options:** Includes checkboxes for SE Info, SE Time, Description of Exercise Stress Examination, Description of Pharmacological Stress Examination, Segment Scoring, and Bull's eye.
- Buttons:** Includes buttons for New Protocol, Save as Protocol, Delete Protocol, Rename Protocol, New View, Delete View, Apply, Exit, and Load Defaults.

	PLAX	PSAX	A4C	A2C	Loop Length	Cont.	Time(s)	Select	Loops Per View	Timer
Rest	B	B	B	B	1	<input type="checkbox"/>	180	<input type="checkbox"/>	1	<input type="checkbox"/>
Impost					1	<input checked="" type="checkbox"/>	180	<input checked="" type="checkbox"/>	1	<input type="checkbox"/>

**SonoScape**



TALENTED FEATURES  
INSPIRE MORE  
APPLICATIONS

ADVANCED UROLOGY SOLUTIONS  
THOROUGH IMAGING EVIDENCES FOR PRECISE  
DIAGNOSIS





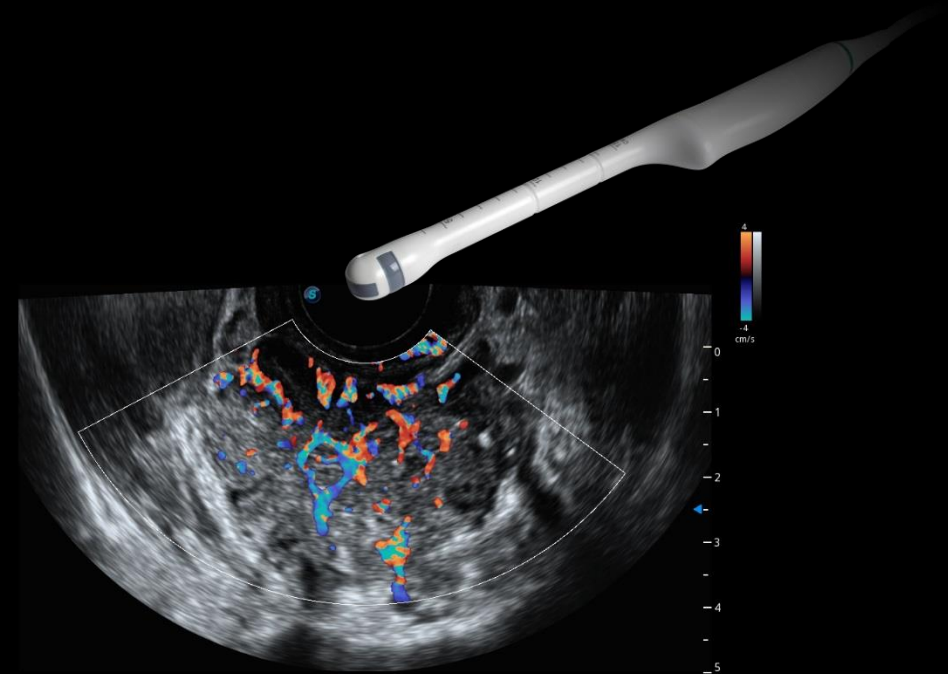
TALENTED FEATURES  
INSPIRE MORE  
APPLICATIONS

ADVANCED UROLOGY SOLUTIONS  
THOROUGH IMAGING EVIDENCES FOR PRECISE  
DIAGNOSIS

# Professional Urology Transducer BCC9-5

- Simultaneous biplanar transrectal transducer convex/convex
- Slender design for minimizing patient discomfort
- Simultaneous images of the sagittal and transverse planes provide a clear indication of needle placement for quicker and more confident biopsies
- Advanced technologies including CEUS, Compression elastography

B  
FPS 8  
D/G 160/6  
GN 155  
I/P 0/10  
PWR 80  
FRQ 6.5-8.5  
D 5.0cm  
μS 4  
Z 0.8  
PHI  
CFM  
PRF 0.5  
WF 80  
GN 14  
C/P 5/60  
PWR 100  
FRQ 4.5



**SonoScape**

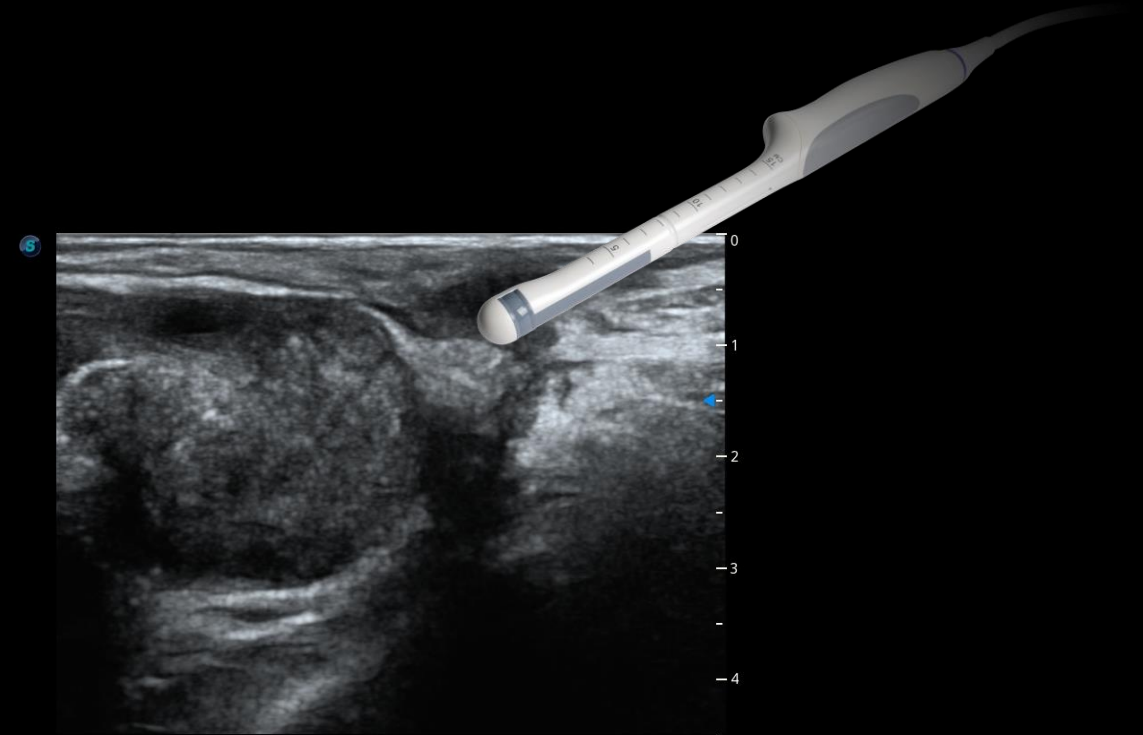


TALENTED FEATURES  
INSPIRE MORE  
APPLICATIONS

ADVANCED UROLOGY SOLUTIONS  
THOROUGH IMAGING EVIDENCES FOR PRECISE  
DIAGNOSIS

# Professional Urology Transducers BCL10-5

- Bipolar transrectal transducer convex/linear
- Sagittal scanning of any size prostate from base to apex
- Clear and detailed image, for accurate volume studies and source dose planning
- Customizable sagittal grids and preferences for brachytherapy
- Clear view of needle placement



**SonoScape**





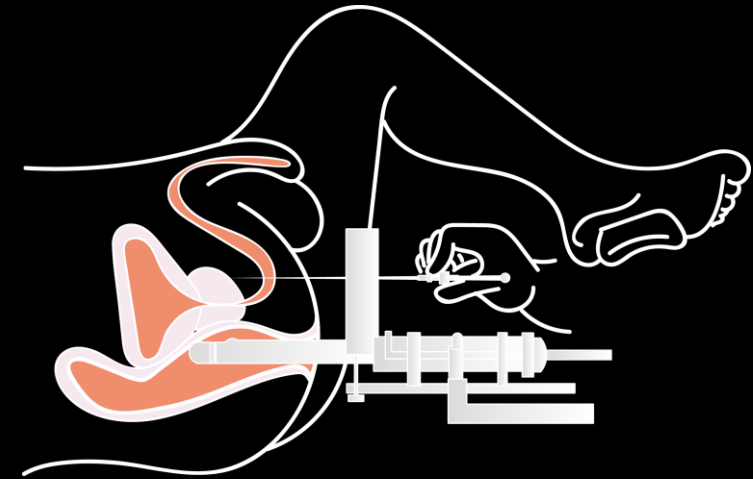
TALENTED FEATURES  
INSPIRE MORE  
APPLICATIONS

ADVANCED UROLOGY SOLUTIONS  
THOROUGH IMAGING EVIDENCES FOR PRECISE  
DIAGNOSIS



## TRANSRECTAL BIOPSIES

- Endocavity Biplane Transducer BCC9-5
- HQ Scan
- Micro F
- Prostate CEUS
- Strain Elastography



## TRANSPERINEAL BIOPSIES

- Prostate Biplane Transducer BCL10-5
- HQ Scan
- Micro F
- Dual Live
- Biopsy Grid for seed implantation

**SonoScape**



TALENTED FEATURES  
INSPIRE MORE  
APPLICATIONS

ADVANCED INTERVENTIONAL TRANSDUCERS  
TAILORED TREATMENT SOLUTIONS TO ENLIGHTEN HOPE





TALENTED FEATURES  
INSPIRE MORE  
APPLICATIONS

ADVANCED INTERVENTIONAL TRANSDUCERS  
TAILORED TREATMENT SOLUTIONS TO ENLIGHTEN HOPE

## Comprehensive Intraoperative Transducers

- The use of intraoperative probes in open surgery has profound meaning in diagnosis and decision making.
- A variety selection of hockey, "T" and "I" shape with linear and convex alignment makes it feasible to reach difficult positions.
- Compact and flexible design with a groove for finger placement is tailored for surgery operation.



**SonoScape**

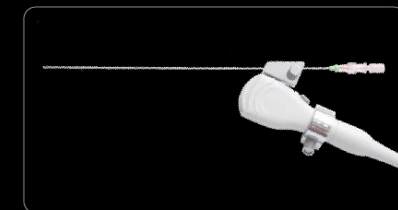
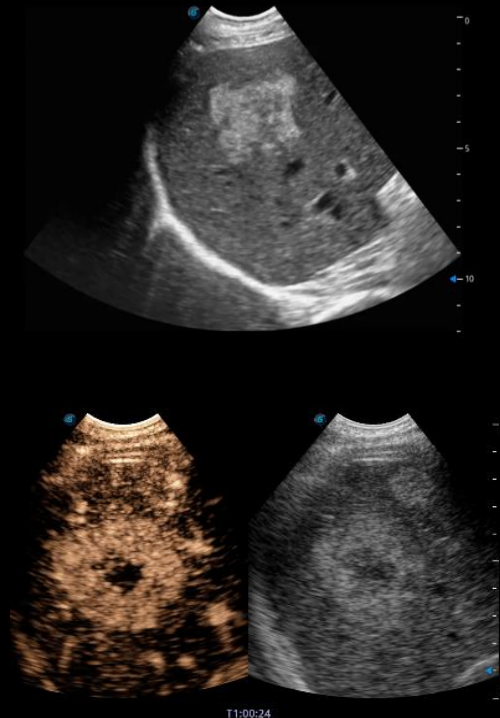


TALENTED FEATURES  
INSPIRE MORE  
APPLICATIONS

ADVANCED INTERVENTIONAL TRANSDUCERS  
TAILORED TREATMENT SOLUTIONS TO ENLIGHTEN HOPE

## Dedicated interventional Transducer C322

- Wide bandwidth micro convex transducer
- Dedicated interventional transducer
- Hand-fit design and minimum blind area of biopsy
- Contrast Imaging for improved sensitivity and accuracy of lesion detection and classification
- Professional NGB (Easy separation of needle from NGB, Nanometer coating of NGB for better disinfection)



**SonoScape**

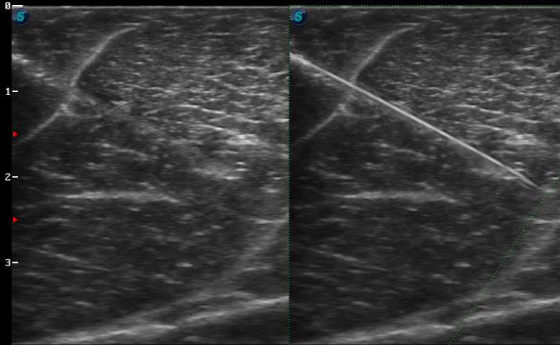


TALENTED FEATURES  
INSPIRE MORE  
APPLICATIONS

ADVANCED INTERVENTIONAL TRANSDUCERS  
TAILORED TREATMENT SOLUTIONS TO ENLIGHTEN HOPE

## Vis-Needle

FPS 30  
D/G 120/4  
GN 71  
I/P 0/30  
PWR 70  
FRQ 9.5-13.6  
D 4.0cm



- Dual Live Mode for comparison and multi angles for beam steering
- Vis-Needle delineates needle location when performing intervention such as nerve blocks
- Improved accuracy and efficiency in diagnosis are possible with beam steering added to Vis-Needle

## Interventional ABD CEUS

B  
T  
I/P 0/30  
D 10.0cm  
D/G 160/11  
FRQ 2.8-4.4  
PWR 4  
Z 0.85  
CEUS  
FRQ 3.7-4.5  
GN 185  
C/P 1.3x20  
PWR 4



- Improved sensitivity and resolution of contrast bubbles on C322
- Provides higher contrast-to-tissue ratio (CTR) and better penetration
- MFI (Micro Flow Imaging) presents every detail in micro blood flow perfusion

**SonoScape**

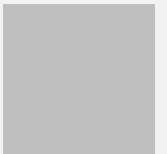


# 04

## Easeful Experience within Easy Reach

---

- 21.5" monitor
- 13.3" touch screen
- 5 probe socket
- Sono-help
- Smooth user interaction
- Live saving
- Quick export
- Swift probe / preset switch
- DICOM3.0





Optimized Design  
Inspires More Easeful Scanning

**SonoScape**



# Optimized Design Inspires More Easeful Scanning



Wifi connection



Sono-Help tutorial



Energy saving screen



Bluetooth control



Built-in manual



Stand-by mode



Sono-Synch

**SonoScape**

Easy yet Clever Workflow

# 13.3" tilting touch screen

To accommodate user viewing  
preference in any scanning  
environment



**SonoScape**

Easy yet Clever Workflow

# Cable Management System

To arrange cables in a clear and tidy manner and  
reduce the risk of infection caused by unclean  
cables

**SonoScape**





Easy yet Clever Workflow

# Two-level adjustable gel warmer

To maintain ultrasound gel at a comfortable temperature and leave no detail for caring behind

**SonoScape**





Easy yet Clever Workflow

# Built-in high-capacity battery

To protect users from accidental pause  
and data loss due to power outage

**SonoScape**

Easy yet Clever Workflow

# Integrated Armrest

To provide support to the upper body, and guide arms into a relaxed position, placing less tension and pain on muscle

**SonoScape**



SonoScape

Easy yet Clever Workflow



# Back-lit Keyboard

To make the operation in darkness a comfortable experience and help the users locate the keys more easily

**SonoScape**



Easy yet Clever Workflow



# Five probe sockets

To save clinicians valuable time and energy by relieving the trouble of changing transducers frequently

**SonoScape**





EASEFUL EXPERIENCE  
WITHIN EASY REACH



## Connected Workflow

Sono-Drop  
Sono-Synch

## Professional Tutorial

Sono-Help  
Sono-Assistant

**SonoScape**



EASEFUL EXPERIENCE  
WITHIN EASY REACH

CONSIDERATE USER INTERACTION  
MAKES THE SCANNING WITH ULTRASOUND SILKY  
SMOOTH

## Sono-Drop



Fast and convenient on site wireless  
ultrasound image transmission from the  
ultrasound system to your smart phone

## Sono-Synch



Real-time ultrasound interface  
synchronization to serve and promote  
high-quality remote medical  
consultation

**SonoScape**



EASEFUL EXPERIENCE  
WITHIN EASY REACH

CONSIDERATE USER INTERACTION  
MAKES THE SCANNING WITH ULTRASOUND SILKY  
SMOOTH

## Sono-Help

Scanning Tutorials Cover All Sorts of Applications

- Anatomical diagram illustrations including schematic and ultrasound picture
- Standard ultrasonogram comparison with real-time scanning
- Scanning reference picture demonstrating appropriate patient position and probe placement.

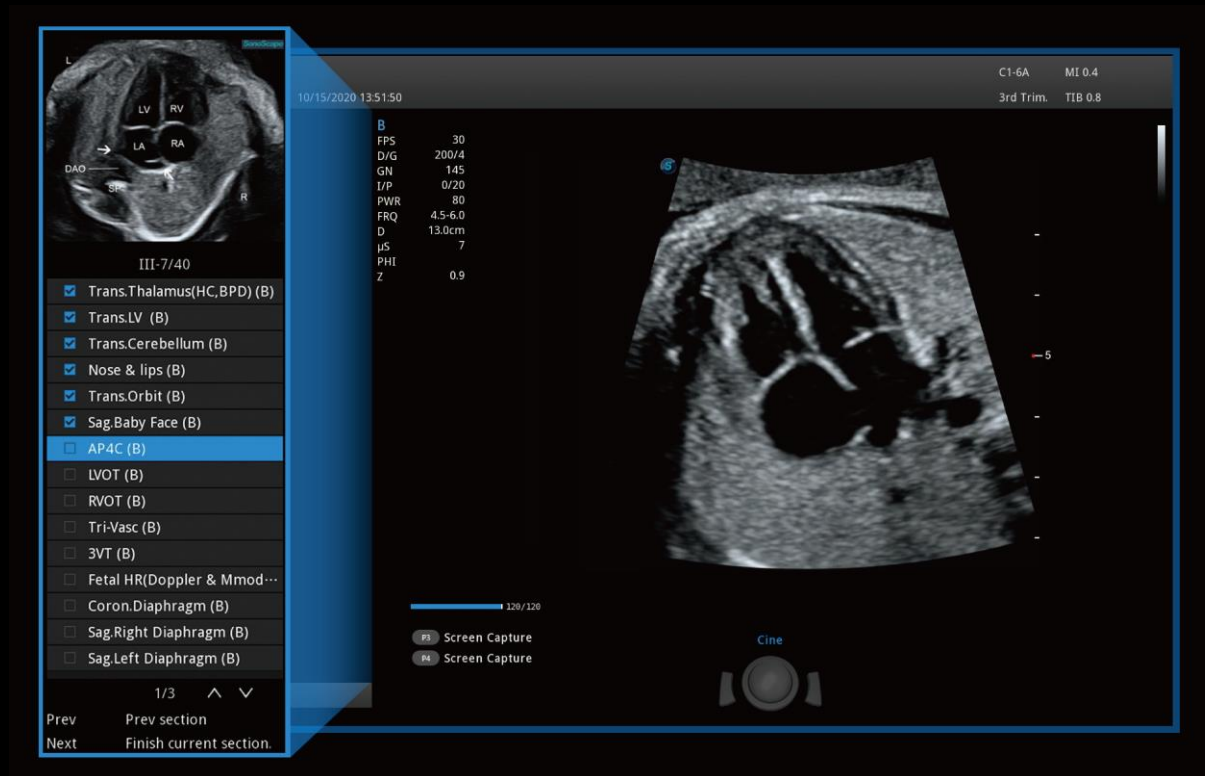


**SonoScape**



EASEFUL EXPERIENCE  
WITHIN EASY REACH

CONSIDERATE USER INTERACTION  
MAKES THE SCANNING WITH ULTRASOUND SILKY  
SMOOTH



## Sono-Assistant

In-built Standard Scan Protocols  
for More Consistency

- Helps streamline workflow while increasing standardization and reducing keystrokes and exam time by up to 50%
- Available on Vascular and OB application
- Templates are user configurable

# Features Comparison



Items		P50 Elite	P40 Elite
Performance	Image Quality	Better ABD and OB image with single crystal convex Better cardiac image with single crystal phased array Better 3D-like color flow with well-defined vessel walls when Bright Flow is activated. Better color sensitivity and slow flow visualization with Micro F	=
Ergonomics	Sockets	5 Active	4 active+ 1parking
	Gel Warmer	Standard	Optional
	Built-in Battery	Optional	Optional
Probes	Convex	C1-6 single crystal as default	3C-A regular convex as default
	Phased Array	S1-5 single crystal as default	4P-A single sector as default
	TEE	Yes	No
	Laparoscopic	Yes	No
Features	GI Features	Optional ABD Contrast, SMP Contrast, S-Thyroid	Optional ABD Contrast, SMP Contrast, S-Thyroid
	OB/GYN Features	Optional S-Live/S-Live Silhouette/ S-Live Contour, S-Depth, STIC, Color 3D, VCI, FreeVue, S-Spine, GYN Contrast, AVC Follicle	Optional S-Fetus, S-Live/S-Live Silhouette/ S-Live Contour, S-Depth, STIC, Color 3D, VCI, FreeVue, S-Spine, GYN Contrast, AVC Follicle
	CV Features	Optional MQA, Stress echo , LVO	Optional MQA, Stress echo





Thanks for Listening

**SonoScape**